



# R4RL2 Polyclonal Antibody

<b>Catalog No</b>	YP-Ab-07130
<b>Isotype</b>	IgG
<b>Reactivity</b>	Human;Rat;Mouse
<b>Applications</b>	WB;ELISA
<b>Gene Name</b>	RTN4RL2 NGRH1 NGRL3
<b>Protein Name</b>	Reticulon-4 receptor-like 2 (Nogo receptor-like 3) (Nogo-66 receptor homolog 1) (Nogo-66 receptor-related protein 2) (NgR2)
<b>Immunogen</b>	Synthesized peptide derived from human protein . at AA range: 290-370
<b>Specificity</b>	R4RL2 Polyclonal Antibody detects endogenous levels of protein.
<b>Formulation</b>	Liquid in PBS containing 50% glycerol, and 0.02% sodium azide.
<b>Source</b>	Polyclonal, Rabbit,IgG
<b>Purification</b>	The antibody was affinity-purified from rabbit antiserum by affinity-chromatography using epitope-specific immunogen.
<b>Dilution</b>	WB 1:500-2000 ELISA 1:5000-20000
<b>Concentration</b>	1 mg/ml
<b>Purity</b>	≥90%
<b>Storage Stability</b>	-20°C/1 year
<b>Synonyms</b>	
<b>Observed Band</b>	46kD
<b>Cell Pathway</b>	Cell membrane ; Lipid-anchor, GPI-anchor . Membrane raft . Cell projection, dendrite . Perikaryon . Cell projection, axon . Localized to the surface of neurons, including axons. Detected close to synapses, but is excluded from synapses. .
<b>Tissue Specificity</b>	Highly expressed in brain and liver. Expressed at lower levels in kidney, mammary gland, placenta, skeletal muscle, spleen and thyroid.
<b>Function</b>	function:May play a role in regulating axonal regeneration and plasticity in the adult central nervous system.,PTM:Undergoes zinc metalloproteinase-mediated ectodomain shedding in neuroblastoma cells; where BRE is released as a full-length ectodomain and an N-terminal fragment containing the leucine-rich repeat (LRR) region of the protein.,similarity:Belongs to the Nogo receptor family.,similarity:Contains 8 LRR (leucine-rich) repeats.,subcellular location:Localized to the surface of neurons, including axons.,tissue specificity:Highly expressed in brain and liver. Expressed at lower levels in kidney, mammary gland, placenta, skeletal muscle, spleen and thyroid.,
<b>Background</b>	function:May play a role in regulating axonal regeneration and plasticity in the adult central nervous system.,PTM:Undergoes zinc metalloproteinase-mediated ectodomain shedding in neuroblastoma cells; where BRE is released as a full-length ectodomain and an N-terminal fragment containing the leucine-rich repeat (LRR) region of the protein.,similarity:Belongs to the Nogo receptor



family.,similarity:Contains 8 LRR (leucine-rich) repeats.,subcellular location:Localized to the surface of neurons, including axons.,tissue specificity:Highly expressed in brain and liver. Expressed at lower levels in kidney, mammary gland, placenta, skeletal muscle, spleen and thyroid.,

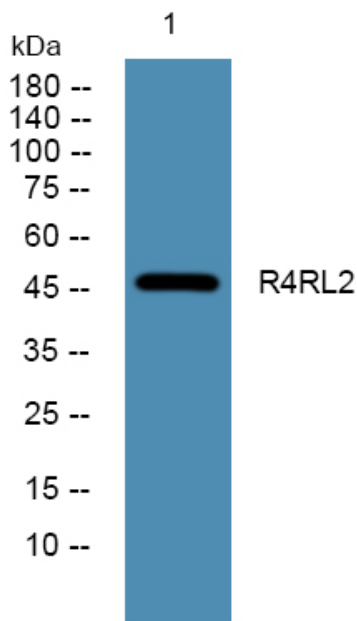
**matters needing attention**

Avoid repeated freezing and thawing!

**Usage suggestions**

This product can be used in immunological reaction related experiments. For more information, please consult technical personnel.

**Products Images**



Western blot analysis of lysates from K562 cells, primary antibody was diluted at 1:1000, 4° over night