



CRTAM Polyclonal Antibody

| | |
|---------------------------|--|
| Catalog No | YP-Ab-07135 |
| Isotype | IgG |
| Reactivity | Human;Mouse |
| Applications | WB;ELISA |
| Gene Name | CRTAM |
| Protein Name | Cytotoxic and regulatory T-cell molecule (Class-I MHC-restricted T-cell-associated molecule) (CD antigen CD355) |
| Immunogen | Synthesized peptide derived from human protein . at AA range: 260-340 |
| Specificity | CRTAM Polyclonal Antibody detects endogenous levels of protein. |
| Formulation | Liquid in PBS containing 50% glycerol, and 0.02% sodium azide. |
| Source | Polyclonal, Rabbit,IgG |
| Purification | The antibody was affinity-purified from rabbit antiserum by affinity-chromatography using epitope-specific immunogen. |
| Dilution | WB 1:500-2000 ELISA 1:5000-20000 |
| Concentration | 1 mg/ml |
| Purity | ≥90% |
| Storage Stability | -20°C/1 year |
| Synonyms | |
| Observed Band | 43kD |
| Cell Pathway | Cell membrane ; Single-pass type I membrane protein . In a subset of CD4+ T-cells, colocalizes with SCRIB at the immunological synapse during the late phase of T-cell activation. . |
| Tissue Specificity | In the immune system, expression is restricted to activated class-I MHC-restricted cells, including NKT and CD8 T-cells (PubMed:10811014, PubMed:15811952, PubMed:16300832). Strongly expressed in spleen, thymus, small intestine, peripheral blood leukocyte, and in Purkinje neurons in cerebellum. Expressed at much lower levels in testis, ovary, colon, lung and lymphoid tissues (PubMed:16300832). |
| Function | function:Interaction with CADM1 promotes natural killer (NK) cell cytotoxicity and interferon-gamma (IFN-gamma) secretion by CD8+ cells in vitro as well as NK cell-mediated rejection of tumors expressing CADM3 in vivo.,similarity:Belongs to the nectin family.,similarity:Contains 1 Ig-like C2-type (immunoglobulin-like) domain.,similarity:Contains 1 Ig-like V-type (immunoglobulin-like) domain.,subunit:Interacts with CADM1.,tissue specificity:In the immune system, expression is restricted to activated class-I MHC-restricted cells, including NKT and CD8 cells. Strongly expressed in spleen, thymus, small intestine, peripheral blood leukocyte, and in Purkinje neurons in cerebellum. Expressed at much lower levels in testis, ovary, colon, lung and lymphoid tissues., |



Background

cytotoxic and regulatory T-cell molecule(CRTAM) Homo sapiens The CRTAM gene is upregulated in CD4 (see MIM 186940)-positive and CD8 (see CD8A; MIM 186910)-positive T cells and encodes a type I transmembrane protein with V and C1-like Ig domains (Yeh et al., 2008 [PubMed 18329370]).[supplied by OMIM, Feb 2009],

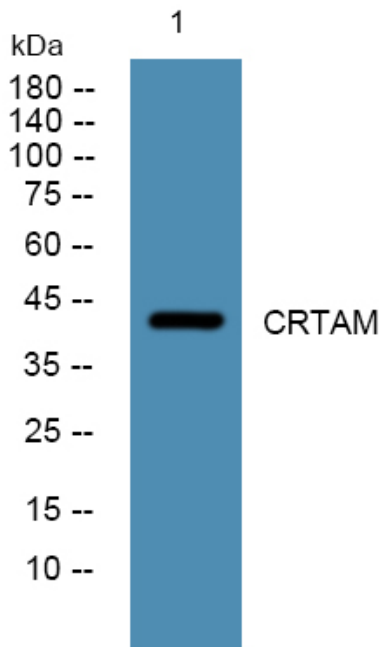
matters needing attention

Avoid repeated freezing and thawing!

Usage suggestions

This product can be used in immunological reaction related experiments. For more information, please consult technical personnel.

Products Images



Western blot analysis of lysates from PC12 cells, primary antibody was diluted at 1:1000, 4° over night