



TNR19 Polyclonal Antibody

Catalog No	YP-Ab-07145
Isotype	IgG
Reactivity	Human;Mouse;
Applications	WB;ELISA
Gene Name	TNFRSF19 TAJ TROY UNQ1888/PRO4333
Protein Name	Tumor necrosis factor receptor superfamily member 19 (TRADE) (Toxicity and JNK inducer)
Immunogen	Synthesized peptide derived from human protein . at AA range: 20-100
Specificity	TNR19 Polyclonal Antibody detects endogenous levels of protein.
Formulation	Liquid in PBS containing 50% glycerol, and 0.02% sodium azide.
Source	Polyclonal, Rabbit,IgG
Purification	The antibody was affinity-purified from rabbit antiserum by affinity-chromatography using epitope-specific immunogen.
Dilution	WB 1:500-2000 ELISA 1:5000-20000
Concentration	1 mg/ml
Purity	≥90%
Storage Stability	-20°C/1 year
Synonyms	
Observed Band	46kD
Cell Pathway	Membrane ; Single-pass type I membrane protein .
Tissue Specificity	Highly expressed in prostate. Detected at lower levels in thymus, spleen, testis, uterus, small intestine, colon and peripheral blood leukocytes.
Function	function:Can mediate activation of JNK and NF-kappa-B. May promote caspase-independent cell death.,similarity:Contains 3 TNFR-Cys repeats.,subunit:Associates with TRAF1, TRAF2, TRAF3 and TRAF5. Interacts with LINGO1.,tissue specificity:Highly expressed in prostate. Detected at lower levels in thymus, spleen, testis, uterus, small intestine, colon and peripheral blood leukocytes.,
Background	The protein encoded by this gene is a member of the TNF-receptor superfamily. This receptor is highly expressed during embryonic development. It has been shown to interact with TRAF family members, and to activate JNK signaling pathway when overexpressed in cells. This receptor is capable of inducing apoptosis by a caspase-independent mechanism, and it is thought to play an essential role in embryonic development. Alternatively spliced transcript variants encoding distinct isoforms have been described. [provided by RefSeq, Jul 2008],



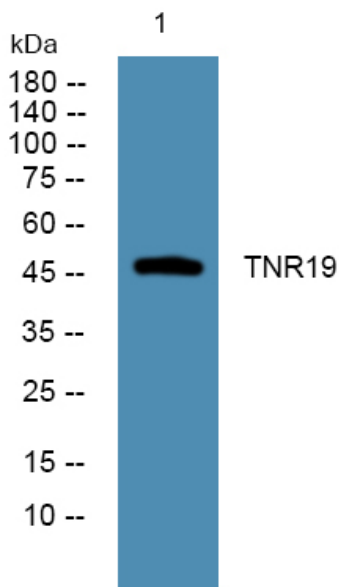
matters needing attention

Avoid repeated freezing and thawing!

Usage suggestions

This product can be used in immunological reaction related experiments. For more information, please consult technical personnel.

Products Images



Western blot analysis of lysates from KB cells, primary antibody was diluted at 1:1000, 4°over night