

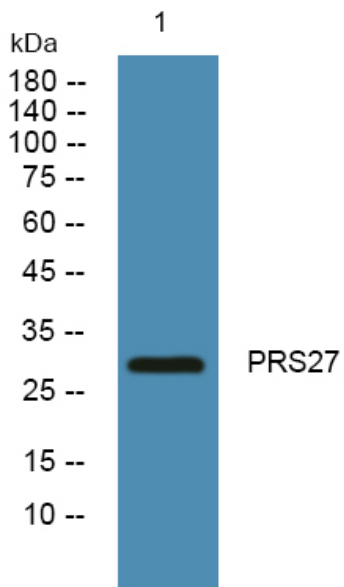


PRS27 Polyclonal Antibody

| | |
|----------------------------------|---|
| Catalog No | YP-Ab-07150 |
| Isotype | IgG |
| Reactivity | Human;Rat;Mouse |
| Applications | WB;ELISA |
| Gene Name | PRSS27 MPN UNQ1884/PRO4327 |
| Protein Name | Serine protease 27 (EC 3.4.21.-) (Marapsin) (Pancreasin) |
| Immunogen | Synthesized peptide derived from human protein . at AA range: 30-110 |
| Specificity | PRS27 Polyclonal Antibody detects endogenous levels of protein. |
| Formulation | Liquid in PBS containing 50% glycerol, and 0.02% sodium azide. |
| Source | Polyclonal, Rabbit,IgG |
| Purification | The antibody was affinity-purified from rabbit antiserum by affinity-chromatography using epitope-specific immunogen. |
| Dilution | WB 1:500-2000 ELISA 1:5000-20000 |
| Concentration | 1 mg/ml |
| Purity | ≥90% |
| Storage Stability | -20°C/1 year |
| Synonyms | |
| Observed Band | 31kD |
| Cell Pathway | Secreted. |
| Tissue Specificity | Expressed predominantly in the pancreas. |
| Function | PTM:N-glycosylated.,similarity:Belongs to the peptidase S1 family.,similarity:Contains 1 peptidase S1 domain.,tissue specificity:Expressed predominantly in the pancreas., |
| Background | This gene is located within a large protease gene cluster on chromosome 16. It belongs to the group-1 subfamily of serine proteases. The encoded protein is a secreted tryptic serine protease and is expressed mainly in the pancreas. Alternative splicing results in multiple transcript variants. [provided by RefSeq, Jan 2016], |
| matters needing attention | Avoid repeated freezing and thawing! |
| Usage suggestions | This product can be used in immunological reaction related experiments. For more information, please consult technical personnel. |



Products Images



Western blot analysis of lysates from K562 cells,
primary antibody was diluted at 1:1000, 4° over night