



NANO2 Polyclonal Antibody

Catalog No	YP-Ab-07185
Isotype	IgG
Reactivity	Human;Mouse
Applications	WB;ELISA
Gene Name	NANOS2 NOS2
Protein Name	Nanos homolog 2 (NOS-2)
Immunogen	Synthesized peptide derived from human protein . at AA range: 10-90
Specificity	NANO2 Polyclonal Antibody detects endogenous levels of protein.
Formulation	Liquid in PBS containing 50% glycerol, and 0.02% sodium azide.
Source	Polyclonal, Rabbit,IgG
Purification	The antibody was affinity-purified from rabbit antiserum by affinity-chromatography using epitope-specific immunogen.
Dilution	WB 1:500-2000 ELISA 1:5000-20000
Concentration	1 mg/ml
Purity	≥90%
Storage Stability	-20°C/1 year
Synonyms	
Observed Band	15kD
Cell Pathway	Cytoplasm . Cytoplasm, P-body . Cytoplasm, perinuclear region . Localizes at P-bodies during gonocyte development (By similarity). More abundant in perinuclear region of the cytoplasm of the germ cells of the adult testis. .
Tissue Specificity	Testis and ovary. Expression found in several spermatogenic stages: in cells on the periphery of the tubules which could correspond to spermatogonia, in spermatocytes and in round spermatids (at protein level).
Function	domain:The Nanos-type zinc finger is composed of two C2HC motifs, each motif binding one molecule of zinc. It is essential for the translation repression activity of the protein.,function:Required to support proliferation and self-renewal of proximal germ cells in males only. Probably regulates translation of specific mRNAs by associating with the 3'-UTR of mRNA targets. Essential for spermatogonia formation.,similarity:Belongs to the nanos family.,similarity:Contains 1 nanos-type zinc finger.,
Background	domain:The Nanos-type zinc finger is composed of two C2HC motifs, each motif binding one molecule of zinc. It is essential for the translation repression activity of the protein.,function:Required to support proliferation and self-renewal of proximal germ cells in males only. Probably regulates translation of specific mRNAs by associating with the 3'-UTR of mRNA targets. Essential for spermatogonia formation.,similarity:Belongs to the nanos family.,similarity:Contains 1 nanos-type



zinc finger.,

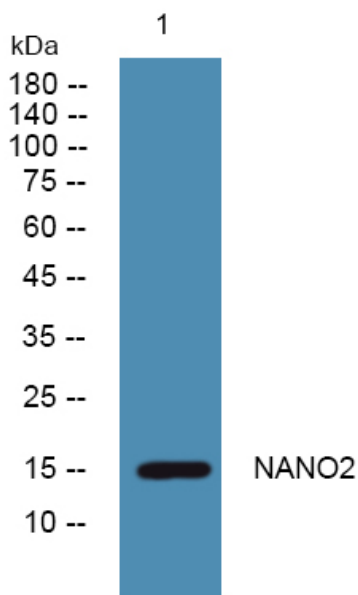
matters needing attention

Avoid repeated freezing and thawing!

Usage suggestions

This product can be used in immunological reaction related experiments. For more information, please consult technical personnel.

Products Images



Western blot analysis of lysates from Jarkat cells, primary antibody was diluted at 1:1000, 4° over night