

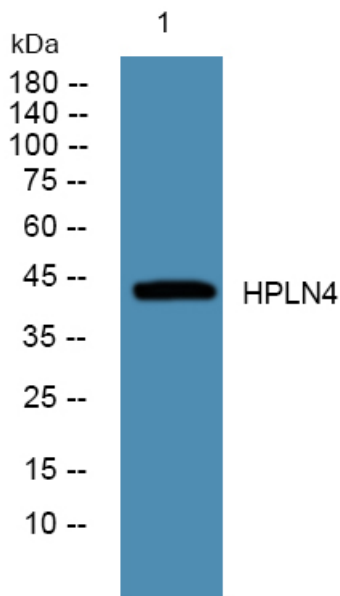


HPLN4 Polyclonal Antibody

Catalog No	YP-Ab-07201
Isotype	IgG
Reactivity	Human;Mouse
Applications	WB;ELISA
Gene Name	HAPLN4 BRAL2 KIAA1926
Protein Name	Hyaluronan and proteoglycan link protein 4 (Brain link protein 2)
Immunogen	Synthesized peptide derived from human protein . at AA range: 90-170
Specificity	HPLN4 Polyclonal Antibody detects endogenous levels of protein.
Formulation	Liquid in PBS containing 50% glycerol, and 0.02% sodium azide.
Source	Polyclonal, Rabbit,IgG
Purification	The antibody was affinity-purified from rabbit antiserum by affinity-chromatography using epitope-specific immunogen.
Dilution	WB 1:500-2000 ELISA 1:5000-20000
Concentration	1 mg/ml
Purity	≥90%
Storage Stability	-20°C/1 year
Synonyms	
Observed Band	44kD
Cell Pathway	Secreted, extracellular space, extracellular matrix .
Tissue Specificity	Expressed predominantly in brain.
Function	function:Binds to hyaluronic acid and may be involved in formation of the extracellular matrix.,similarity:Belongs to the HAPLN family.,similarity:Contains 1 Ig-like C2-type (immunoglobulin-like) domain.,similarity:Contains 2 Link domains.,tissue specificity:Expressed predominantly in brain.,
Background	function:Binds to hyaluronic acid and may be involved in formation of the extracellular matrix.,similarity:Belongs to the HAPLN family.,similarity:Contains 1 Ig-like C2-type (immunoglobulin-like) domain.,similarity:Contains 2 Link domains.,tissue specificity:Expressed predominantly in brain.,
matters needing attention	Avoid repeated freezing and thawing!
Usage suggestions	This product can be used in immunological reaction related experiments. For more information, please consult technical personnel.



Products Images



Western blot analysis of lysates from K562 cells,
primary antibody was diluted at 1:1000, 4° over night