



FCN3 Polyclonal Antibody

Catalog No	YP-Ab-07225
Isotype	IgG
Reactivity	Human;Rat;Mouse;
Applications	WB;ELISA
Gene Name	FCN3 FCNH HAKA1
Protein Name	Ficolin-3 (Collagen/fibrinogen domain-containing lectin 3 p35) (Collagen/fibrinogen domain-containing protein 3) (Hakata antigen)
Immunogen	Synthesized peptide derived from human protein . at AA range: 130-210
Specificity	FCN3 Polyclonal Antibody detects endogenous levels of protein.
Formulation	Liquid in PBS containing 50% glycerol, and 0.02% sodium azide.
Source	Polyclonal, Rabbit,IgG
Purification	The antibody was affinity-purified from rabbit antiserum by affinity-chromatography using epitope-specific immunogen.
Dilution	WB 1:500-2000 ELISA 1:5000-20000
Concentration	1 mg/ml
Purity	≥90%
Storage Stability	-20°C/1 year
Synonyms	
Observed Band	32kD
Cell Pathway	Secreted. Found in blood plasma, bronchus, alveolus and bile duct.
Tissue Specificity	Liver and lung. In liver it is produced by bile duct epithelial cells and hepatocytes. In lung it is produced by both ciliated bronchial epithelial cells and type II alveolar epithelial cells.
Function	disease:Antigen found 14 times more frequently in the serum of patients with systemic lupus erythematosus (SLE) than in patients with other autoimmune diseases.,function:May function in innate immunity through activation of the lectin complement pathway. Calcium-dependent and GlcNAc-binding lectin. Has affinity with GalNAc, GlcNAc, D-fucose, as mono/oligosaccharide and lipopolysaccharides from S.typhimurium and S.minnesota.,PTM:The N-terminus is blocked.,similarity:Belongs to the ficolin lectin family.,similarity:Contains 1 collagen-like domain.,similarity:Contains 1 fibrinogen C-terminal domain.,subcellular location:Found in blood plasma, bronchus, alveolus and bile duct.,subunit:Homopolymer; disulfide-linked. May be an octadecamer consisting of an elementary trimer unit. Does not interact with fibronectin, elastin or zymosan. Interacts with MASP1 and MASP2.,tissue specificity:Liver and
Background	ficolin 3(FCN3) Homo sapiens Ficolins are a group of proteins which consist of a collagen-like domain and a fibrinogen-like domain. In human serum, there are



two types of ficolins, both of which have lectin activity. The protein encoded by this gene is a thermolabile beta-2-macroglycoprotein found in all human serum and is a member of the ficolin/opsonin p35 lectin family. The protein, which was initially identified based on its reactivity with sera from patients with systemic lupus erythematosus, has been shown to have a calcium-independent lectin activity. The protein can activate the complement pathway in association with MASPs and sMAP, thereby aiding in host defense through the activation of the lectin pathway. Alternative splicing occurs at this locus and two variants, each encoding a distinct isoform, have been identified. [provided by RefSeq, Jul 2008],

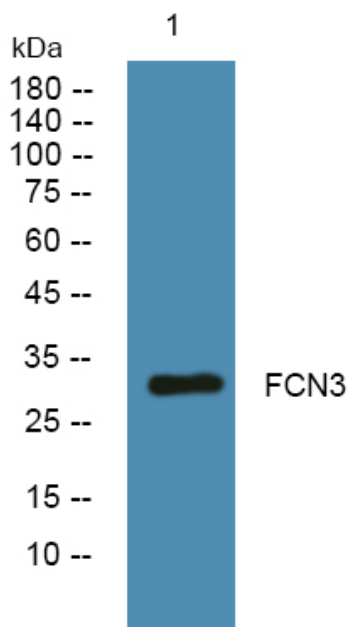
matters needing attention

Avoid repeated freezing and thawing!

Usage suggestions

This product can be used in immunological reaction related experiments. For more information, please consult technical personnel.

Products Images



Western blot analysis of lysates from A431 cells, primary antibody was diluted at 1:1000, 4° over night