



# FCRLB Polyclonal Antibody

<b>Catalog No</b>	YP-Ab-07238
<b>Isotype</b>	IgG
<b>Reactivity</b>	Human;Mouse
<b>Applications</b>	WB;ELISA
<b>Gene Name</b>	FCRLB FCRL2 FCRLM2 FCRY FREB2
<b>Protein Name</b>	Fc receptor-like B (Fc receptor homolog expressed in B-cells protein 2) (FREB-2) (Fc receptor-like and mucin-like protein 2) (Fc receptor-like protein 2) (Fc receptor-related protein Y) (FcRY)
<b>Immunogen</b>	Synthesized peptide derived from human protein . at AA range: 340-420
<b>Specificity</b>	FCRLB Polyclonal Antibody detects endogenous levels of protein.
<b>Formulation</b>	Liquid in PBS containing 50% glycerol, and 0.02% sodium azide.
<b>Source</b>	Polyclonal, Rabbit,IgG
<b>Purification</b>	The antibody was affinity-purified from rabbit antiserum by affinity-chromatography using epitope-specific immunogen.
<b>Dilution</b>	WB 1:500-2000 ELISA 1:5000-20000
<b>Concentration</b>	1 mg/ml
<b>Purity</b>	≥90%
<b>Storage Stability</b>	-20°C/1 year
<b>Synonyms</b>	
<b>Observed Band</b>	46kD
<b>Cell Pathway</b>	Cytoplasm . Endoplasmic reticulum . Seems not to be secreted. .
<b>Tissue Specificity</b>	Expressed at low levels. Expressed in B-lymphocytes. Detected in tonsil, lung, kidney, spleen and placenta. Expressed by a small subset of germinal center B-cells in tonsils and by melanocytes (at protein level).
<b>Function</b>	alternative products:Additional isoforms seem to exist,similarity:Contains 2 Ig-like C2-type (immunoglobulin-like) domains.,subcellular location:Seems not to be secreted.,tissue specificity:Expressed at low levels. Expressed in B-lymphocytes. Detected in tonsil, lung, kidney, spleen and placenta. Expressed by a small subset of germinal center B cells in tonsils and by melanocytes (at protein level).,
<b>Background</b>	FCRL2 belongs to the Fc receptor family. Fc receptors are involved in phagocytosis, antibody-dependent cell cytotoxicity, immediate hypersensitivity, and transcytosis of immunoglobulins via their ability to bind immunoglobulin (Ig) constant regions (Chikae et al., 2005 [PubMed 15676285]).[supplied by OMIM, Mar 2008],



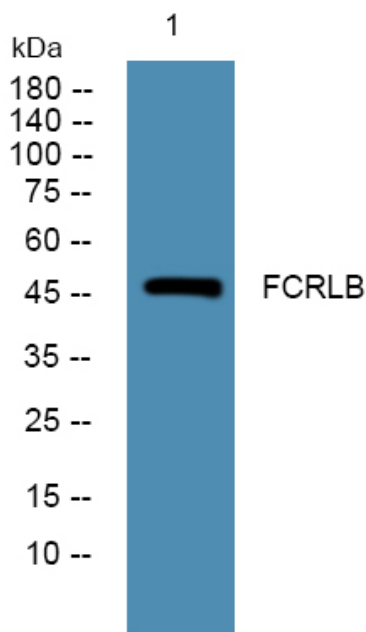
**matters needing attention**

Avoid repeated freezing and thawing!

**Usage suggestions**

This product can be used in immunological reaction related experiments. For more information, please consult technical personnel.

## Products Images



Western blot analysis of lysates from DU145 cells, primary antibody was diluted at 1:1000, 4°over night