



F19A5 Polyclonal Antibody

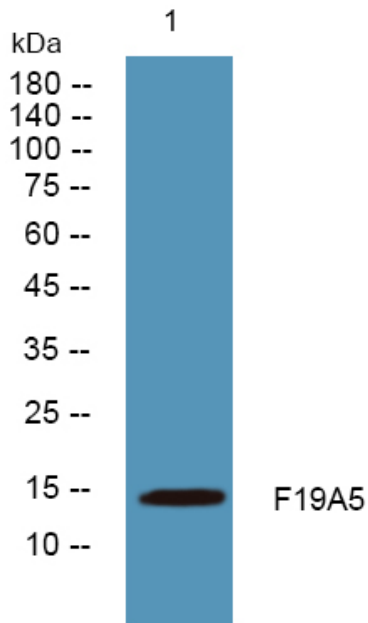
Catalog No	YP-Ab-07248
Isotype	IgG
Reactivity	Human;Mouse
Applications	WB;ELISA
Gene Name	FAM19A5 TFAFA5 UNQ5208/PRO34524
Protein Name	Protein FAM19A5 (Chemokine-like protein TFAFA-5)
Immunogen	Synthesized peptide derived from human protein . at AA range: 370-450
Specificity	F19A5 Polyclonal Antibody detects endogenous levels of protein.
Formulation	Liquid in PBS containing 50% glycerol, and 0.02% sodium azide.
Source	Polyclonal, Rabbit,IgG
Purification	The antibody was affinity-purified from rabbit antiserum by affinity-chromatography using epitope-specific immunogen.
Dilution	WB 1:500-2000 ELISA 1:5000-20000
Concentration	1 mg/ml
Purity	≥90%
Storage Stability	-20°C/1 year
Synonyms	
Observed Band	14kD
Cell Pathway	Secreted .
Tissue Specificity	Expressed in the subcutaneous and perirenal adipose tissue (at protein level) (PubMed:29453251). Highly expressed in adipose tissue with moderate expression in the brain and ovary (PubMed:29453251). Isoform 2: Brain-specific (PubMed:15028294).
Function	similarity:Belongs to the FAM19/TFAFA family.,tissue specificity:Isoform 2 is brain-specific.,
Background	family with sequence similarity 19 member A5, C-C motif chemokine like(FAM19A5) Homo sapiens This gene is a member of the TFAFA family which is composed of five highly homologous genes that encode small secreted proteins. These proteins contain conserved cysteine residues at fixed positions, and are distantly related to MIP-1alpha, a member of the CC-chemokine family. The TFAFA proteins are predominantly expressed in specific regions of the brain, and are postulated to function as brain-specific chemokines or neurokines that act as regulators of immune and nervous cells. [provided by RefSeq, Sep 2013],
matters needing attention	Avoid repeated freezing and thawing!



Usage suggestions

This product can be used in immunological reaction related experiments. For more information, please consult technical personnel.

Products Images



Western blot analysis of lysates from DU145 cells, primary antibody was diluted at 1:1000, 4° over night