



# CGB1 Polyclonal Antibody

<b>Catalog No</b>	YP-Ab-07279
<b>Isotype</b>	IgG
<b>Reactivity</b>	Human;Rat;Mouse;
<b>Applications</b>	WB;ELISA
<b>Gene Name</b>	CGB1
<b>Protein Name</b>	Choriogonadotropin subunit beta variant 1
<b>Immunogen</b>	Synthesized peptide derived from human protein . at AA range: Internal
<b>Specificity</b>	CGB1 Polyclonal Antibody detects endogenous levels of protein.
<b>Formulation</b>	Liquid in PBS containing 50% glycerol, and 0.02% sodium azide.
<b>Source</b>	Polyclonal, Rabbit,IgG
<b>Purification</b>	The antibody was affinity-purified from rabbit antiserum by affinity-chromatography using epitope-specific immunogen.
<b>Dilution</b>	WB 1:500-2000 ELISA 1:5000-20000
<b>Concentration</b>	1 mg/ml
<b>Purity</b>	≥90%
<b>Storage Stability</b>	-20°C/1 year
<b>Synonyms</b>	
<b>Observed Band</b>	20kD
<b>Cell Pathway</b>	Secreted.
<b>Tissue Specificity</b>	Expressed in placenta, testis and pituitary.
<b>Function</b>	similarity:Belongs to the glycoprotein hormones subunit beta family.,tissue specificity:Expressed in placenta, testis and pituitary.,
<b>Background</b>	The beta subunit of chorionic gonadotropin (CGB) is encoded by six highly homologous and structurally similar genes that are arranged in tandem and inverted pairs on chromosome 19q13.3, and contiguous with the luteinizing hormone beta (LHB) subunit gene. The CGB genes are primarily distinguished by differences in the 5' untranslated region. This gene was originally thought to be one of the two pseudogenes (CGB1 and CGB2) of CGB subunit, however, detection of CGB1 and CGB2 transcripts in vivo, and their presence on the polysomes, suggested that these transcripts are translated. To date, a protein product corresponding to CGB1 has not been isolated. The deduced sequence of the hypothetical protein of 132 aa does not share any similarity with that of functional CGB subunits (PMID:8954017). However, a 155 aa protein, translated from a different frame, is about the same size, and sh



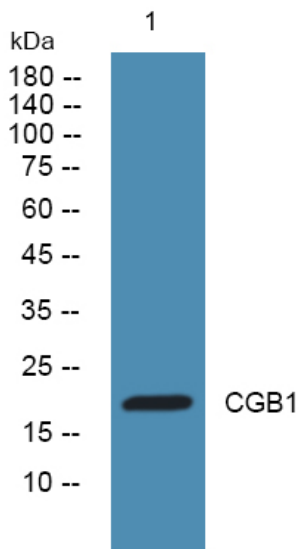
**matters needing attention**

Avoid repeated freezing and thawing!

**Usage suggestions**

This product can be used in immunological reaction related experiments. For more information, please consult technical personnel.

**Products Images**



Western blot analysis of lysates from K562 cells, primary antibody was diluted at 1:1000, 4° over night