



# KGFL1 Polyclonal Antibody

<b>Catalog No</b>	YP-Ab-07292
<b>Isotype</b>	IgG
<b>Reactivity</b>	Human;Rat;Mouse;
<b>Applications</b>	WB;ELISA
<b>Gene Name</b>	KGFLP1
<b>Protein Name</b>	Putative keratinocyte growth factor-like protein 1 (KGF-like protein 1)
<b>Immunogen</b>	Synthesized peptide derived from human protein . at AA range: 41-90
<b>Specificity</b>	KGFL1 Polyclonal Antibody detects endogenous levels of protein.
<b>Formulation</b>	Liquid in PBS containing 50% glycerol, and 0.02% sodium azide.
<b>Source</b>	Polyclonal, Rabbit,IgG
<b>Purification</b>	The antibody was affinity-purified from rabbit antiserum by affinity-chromatography using epitope-specific immunogen.
<b>Dilution</b>	WB 1:500-2000 ELISA 1:5000-20000
<b>Concentration</b>	1 mg/ml
<b>Purity</b>	≥90%
<b>Storage Stability</b>	-20°C/1 year
<b>Synonyms</b>	
<b>Observed Band</b>	10kD
<b>Cell Pathway</b>	
<b>Tissue Specificity</b>	
<b>Function</b>	ovarian follicle development, tissue homeostasis, hair follicle development, reproductive developmental process,cellular amino acid derivative metabolic process, biogenic amine metabolic process, phospholipid metabolic process,lycerophospholipid metabolic process, phosphatidylcholine biosynthetic process, ectoderm development, sex differentiation, positive regulation of cell proliferation, gonad development, epidermis development, female gonad development, lipid biosynthetic process, phospholipid biosynthetic process, response to wounding, organophosphate metabolic process, molting cycle process, hair cycle process, ovulation cycle process, respiratory tube development,lung development, hair follicle morphogenesis, multicellular organism reproduction, tube development, wound healing,regulation of cell proliferation, molting cycle, ethanolamine and derivative metabolic process, homeostat
<b>Background</b>	



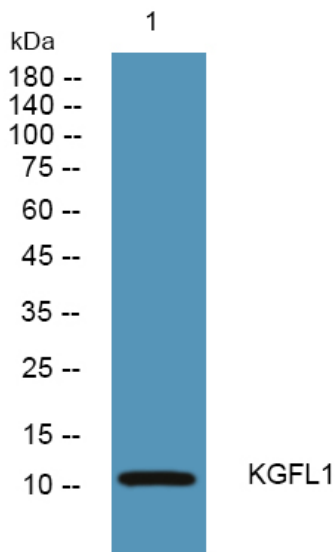
**matters needing attention**

Avoid repeated freezing and thawing!

**Usage suggestions**

This product can be used in immunological reaction related experiments. For more information, please consult technical personnel.

**Products Images**



Western blot analysis of lysates from DU145 cells, primary antibody was diluted at 1:1000, 4° over night