

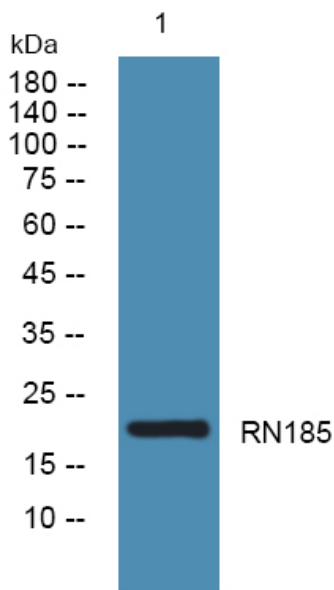


RN185 Polyclonal Antibody

| | |
|----------------------------------|---|
| Catalog No | YP-Ab-07343 |
| Isotype | IgG |
| Reactivity | Human;Mouse;Rat |
| Applications | WB;ELISA |
| Gene Name | RNF185 |
| Protein Name | E3 ubiquitin-protein ligase RNF185 (EC 6.3.2.-) (RING finger protein 185) |
| Immunogen | Synthesized peptide derived from human protein . at AA range: 121-170 |
| Specificity | RN185 Polyclonal Antibody detects endogenous levels of protein. |
| Formulation | Liquid in PBS containing 50% glycerol, and 0.02% sodium azide. |
| Source | Polyclonal, Rabbit,IgG |
| Purification | The antibody was affinity-purified from rabbit antiserum by affinity-chromatography using epitope-specific immunogen. |
| Dilution | WB 1:500-2000 ELISA 1:5000-20000 |
| Concentration | 1 mg/ml |
| Purity | ≥90% |
| Storage Stability | -20°C/1 year |
| Synonyms | |
| Observed Band | 21kD |
| Cell Pathway | Mitochondrion outer membrane ; Multi-pass membrane protein . Endoplasmic reticulum membrane ; Multi-pass membrane protein . |
| Tissue Specificity | Ubiquitously expressed. |
| Function | similarity:Contains 1 RING-type zinc finger., |
| Background | similarity:Contains 1 RING-type zinc finger., |
| matters needing attention | Avoid repeated freezing and thawing! |
| Usage suggestions | This product can be used in immunological reaction related experiments. For more information, please consult technical personnel. |



Products Images



Western blot analysis of lysates from K562 cells,
primary antibody was diluted at 1:1000, 4° over night