



CS012 Polyclonal Antibody

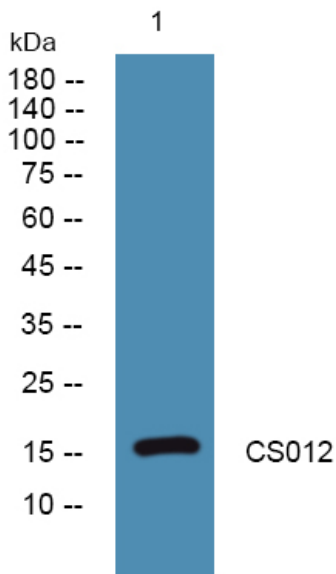
Catalog No	YP-Ab-07356
Isotype	IgG
Reactivity	Human;Rat;Mouse;
Applications	WB;ELISA
Gene Name	C19orf12
Protein Name	Protein C19orf12
Immunogen	Synthesized peptide derived from human protein . at AA range: 103-152
Specificity	CS012 Polyclonal Antibody detects endogenous levels of protein.
Formulation	Liquid in PBS containing 50% glycerol, and 0.02% sodium azide.
Source	Polyclonal, Rabbit,IgG
Purification	The antibody was affinity-purified from rabbit antiserum by affinity-chromatography using epitope-specific immunogen.
Dilution	WB 1:500-2000 ELISA 1:5000-20000
Concentration	1 mg/ml
Purity	≥90%
Storage Stability	-20°C/1 year
Synonyms	
Observed Band	16kD
Cell Pathway	Mitochondrion . Mitochondrion membrane ; Single-pass membrane protein . Endoplasmic reticulum . Cytoplasm, cytosol . In response to oxidative stress, relocates to the cytosol forming aggregates that partially co-localize with mitochondria. .
Tissue Specificity	Brain,Lymph,Melanoma,Ovary,Stomach,
Function	
Background	This gene encodes a small transmembrane protein. Mutations in this gene are a cause of neurodegeneration with brain iron accumulation-4 (NBIA4), but the specific function of the encoded protein is unknown. Alternatively spliced transcript variants encoding multiple isoforms have been observed for this gene. [provided by RefSeq, Dec 2011],
matters needing attention	Avoid repeated freezing and thawing!



Usage suggestions

This product can be used in immunological reaction related experiments. For more information, please consult technical personnel.

Products Images



Western blot analysis of lysates from K562 cells, primary antibody was diluted at 1:1000, 4° over night