



# CCR8 Polyclonal Antibody

<b>Catalog No</b>	YP-Ab-07366
<b>Isotype</b>	IgG
<b>Reactivity</b>	Human;Mouse
<b>Applications</b>	WB;ELISA
<b>Gene Name</b>	CCR8 CKRL1 CMKBR8 CMKBRL2
<b>Protein Name</b>	C-C chemokine receptor type 8 (C-C CKR-8) (CC-CKR-8) (CCR-8) (CC chemokine receptor CHEMR1) (CMKBRL2) (Chemokine receptor-like 1) (CKR-L1) (GPR-CY6) (GPRCY6) (TER1) (CD antigen CDw198)
<b>Immunogen</b>	Synthesized peptide derived from human protein . at AA range: 250-330
<b>Specificity</b>	CCR8 Polyclonal Antibody detects endogenous levels of protein.
<b>Formulation</b>	Liquid in PBS containing 50% glycerol, and 0.02% sodium azide.
<b>Source</b>	Polyclonal, Rabbit,IgG
<b>Purification</b>	The antibody was affinity-purified from rabbit antiserum by affinity-chromatography using epitope-specific immunogen.
<b>Dilution</b>	WB 1:500-2000 ELISA 1:5000-20000
<b>Concentration</b>	1 mg/ml
<b>Purity</b>	≥90%
<b>Storage Stability</b>	-20°C/1 year
<b>Synonyms</b>	
<b>Observed Band</b>	39kD
<b>Cell Pathway</b>	Cell membrane; Multi-pass membrane protein.
<b>Tissue Specificity</b>	PCR rescued clones,Thymus,
<b>Function</b>	caution:Was originally (PubMed:9521068) thought to be a receptor for SCYA3 and SCYA17.,function:Receptor for the chemokine CCL1/SCYA1/I-309. May regulate monocyte chemotaxis and thymic cell line apoptosis. Alternative coreceptor with CD4 for HIV-1 infection.,online information:CC chemokine receptors entry,similarity:Belongs to the G-protein coupled receptor 1 family.,
<b>Background</b>	This gene encodes a member of the beta chemokine receptor family, which is predicted to be a seven transmembrane protein similar to G protein-coupled receptors. Chemokines and their receptors are important for the migration of various cell types into the inflammatory sites. This receptor protein preferentially expresses in the thymus. I-309, thymus activation-regulated cytokine (TARC) and macrophage inflammatory protein-1 beta (MIP-1 beta) have been identified as ligands of this receptor. Studies of this receptor and its ligands suggested its role in regulation of monocyte chemotaxis and thymic cell apoptosis. More specifically, this receptor may contribute to the proper positioning of activated T cells within the



antigenic challenge sites and specialized areas of lymphoid tissues. This gene is located at the chemokine receptor gene cluster region. [provided by RefSeq, Jul 2008],

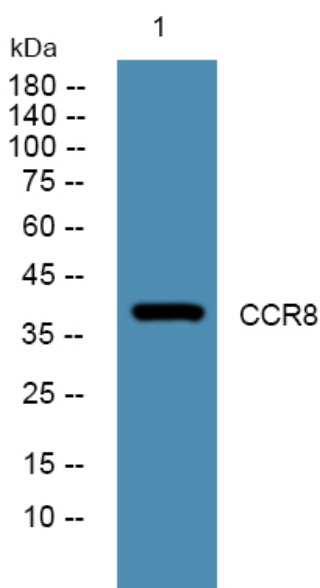
**matters needing attention**

Avoid repeated freezing and thawing!

**Usage suggestions**

This product can be used in immunological reaction related experiments. For more information, please consult technical personnel.

**Products Images**



Western blot analysis of lysates from PC12 cells, primary antibody was diluted at 1:1000, 4° over night