



# C5ARL Polyclonal Antibody

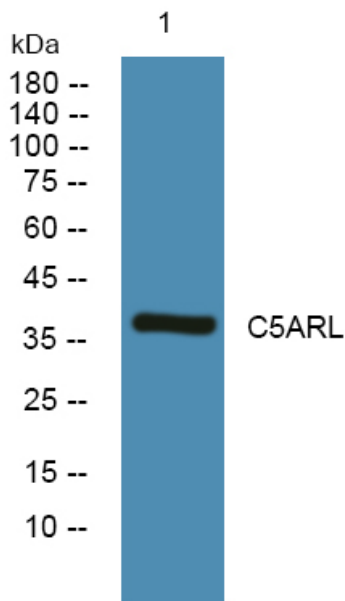
<b>Catalog No</b>	YP-Ab-07387
<b>Isotype</b>	IgG
<b>Reactivity</b>	Human;Rat;Mouse;
<b>Applications</b>	WB;ELISA
<b>Gene Name</b>	GPR77 C5L2
<b>Protein Name</b>	C5a anaphylatoxin chemotactic receptor C5L2 (G-protein coupled receptor 77)
<b>Immunogen</b>	Synthesized peptide derived from human protein . at AA range: 270-350
<b>Specificity</b>	C5ARL Polyclonal Antibody detects endogenous levels of protein.
<b>Formulation</b>	Liquid in PBS containing 50% glycerol, and 0.02% sodium azide.
<b>Source</b>	Polyclonal, Rabbit,IgG
<b>Purification</b>	The antibody was affinity-purified from rabbit antiserum by affinity-chromatography using epitope-specific immunogen.
<b>Dilution</b>	WB 1:500-2000 ELISA 1:5000-20000
<b>Concentration</b>	1 mg/ml
<b>Purity</b>	≥90%
<b>Storage Stability</b>	-20°C/1 year
<b>Synonyms</b>	
<b>Observed Band</b>	37kD
<b>Cell Pathway</b>	Cell membrane ; Multi-pass membrane protein .
<b>Tissue Specificity</b>	Frontal cortex, hippocampus, hypothalamus, pons and liver.
<b>Function</b>	function:Receptor for the chemotactic and inflammatory peptide anaphylatoxin C5a, C4a and C3a and their desarginated derivatives. Couples weakly to Gi-mediated signaling pathways.,similarity:Belongs to the G-protein coupled receptor 1 family.,tissue specificity:Frontal cortex, hippocampus, hypothalamus, pons and liver.,
<b>Background</b>	This gene encodes a G-protein coupled receptor 1 family member involved in the complement system of the innate immune response. Unlike classical G-protein coupled receptors, the encoded protein does not associate with intracellular G-proteins. It may instead modulate signal transduction through the beta-arrestin pathway, and may alternatively act as a decoy receptor. This gene may be involved in coronary artery disease and in the pathogenesis of sepsis. Alternative splicing results in multiple transcript variants. [provided by RefSeq, Nov 2012],
<b>matters needing attention</b>	Avoid repeated freezing and thawing!



**Usage suggestions**

This product can be used in immunological reaction related experiments. For more information, please consult technical personnel.

**Products Images**



Western blot analysis of lysates from Jarkat cells, primary antibody was diluted at 1:1000, 4° over night