



# GPR78 Polyclonal Antibody

<b>Catalog No</b>	YP-Ab-07388
<b>Isotype</b>	IgG
<b>Reactivity</b>	Human;Rat;Mouse;
<b>Applications</b>	WB;ELISA
<b>Gene Name</b>	GPR78 UNQ5925/PRO19818
<b>Protein Name</b>	G-protein coupled receptor 78
<b>Immunogen</b>	Synthesized peptide derived from human protein . at AA range: 290-370
<b>Specificity</b>	GPR78 Polyclonal Antibody detects endogenous levels of protein.
<b>Formulation</b>	Liquid in PBS containing 50% glycerol, and 0.02% sodium azide.
<b>Source</b>	Polyclonal, Rabbit,IgG
<b>Purification</b>	The antibody was affinity-purified from rabbit antiserum by affinity-chromatography using epitope-specific immunogen.
<b>Dilution</b>	WB 1:500-2000 ELISA 1:5000-20000
<b>Concentration</b>	1 mg/ml
<b>Purity</b>	≥90%
<b>Storage Stability</b>	-20°C/1 year
<b>Synonyms</b>	
<b>Observed Band</b>	39kD
<b>Cell Pathway</b>	Cell membrane; Multi-pass membrane protein.
<b>Tissue Specificity</b>	High level of expression in placenta. Expressed throughout the brain at low level. No expression detected in skeletal muscle, lung, heart, liver, pancreas, or kidney.
<b>Function</b>	function:Orphan receptor.,induction:Expression increased in fibroblasts or HeLa cells following UV-A irradiation, exposure to DNA-alkylating agents, or endoplasmic reticulum (ER) stress caused by osmotic shock or the glycosylation inhibitor tunicamycin.,similarity:Belongs to the G-protein coupled receptor 1 family.,tissue specificity:Expressed in pituitary and placenta. No expression detected in brain, skeletal muscle, lung, heart, liver, pancreas, or kidney.,
<b>Background</b>	The protein encoded by this gene belongs to the G protein-coupled receptor family, which contain 7 transmembrane domains and transduce extracellular signals through heterotrimeric G proteins. This is an orphan receptor, which displays significant level of constitutive activity. Association analysis shows preliminary evidence for the involvement of this gene in susceptibility to bipolar affective disorder and schizophrenia. Alternatively spliced transcript variants have been found for this gene. [provided by RefSeq, Nov 2011],



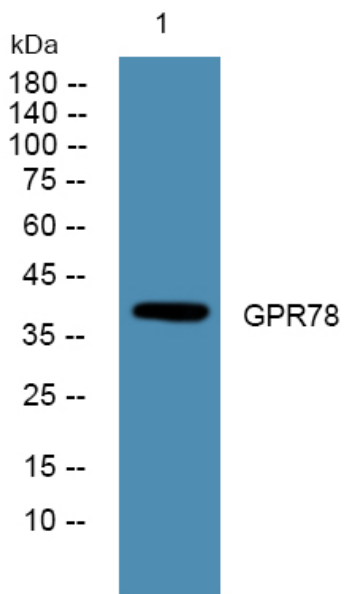
**matters needing attention**

Avoid repeated freezing and thawing!

**Usage suggestions**

This product can be used in immunological reaction related experiments. For more information, please consult technical personnel.

**Products Images**



Western blot analysis of lysates from A431 cells, primary antibody was diluted at 1:1000, 4° over night