



# GP183 Polyclonal Antibody

<b>Catalog No</b>	YP-Ab-07393
<b>Isotype</b>	IgG
<b>Reactivity</b>	Human;Rat;Mouse;
<b>Applications</b>	WB;ELISA
<b>Gene Name</b>	GPR183 EBI2
<b>Protein Name</b>	G-protein coupled receptor 183 (Epstein-Barr virus-induced G-protein coupled receptor 2) (EBI2) (EBV-induced G-protein coupled receptor 2)
<b>Immunogen</b>	Synthesized peptide derived from human protein . at AA range: 110-190
<b>Specificity</b>	GP183 Polyclonal Antibody detects endogenous levels of protein.
<b>Formulation</b>	Liquid in PBS containing 50% glycerol, and 0.02% sodium azide.
<b>Source</b>	Polyclonal, Rabbit,IgG
<b>Purification</b>	The antibody was affinity-purified from rabbit antiserum by affinity-chromatography using epitope-specific immunogen.
<b>Dilution</b>	WB 1:500-2000 ELISA 1:5000-20000
<b>Concentration</b>	1 mg/ml
<b>Purity</b>	≥90%
<b>Storage Stability</b>	-20°C/1 year
<b>Synonyms</b>	
<b>Observed Band</b>	39kD
<b>Cell Pathway</b>	Cell membrane ; Multi-pass membrane protein .
<b>Tissue Specificity</b>	Expressed abundantly in lymphoid tissues such as spleen and lymph node, and in B- and T-lymphocytes (PubMed:16540462, PubMed:8383238). Also highly expressed in lung, heart and gastrointestinal tract, and weakly expressed in the urogenital system and brain (PubMed:16540462, PubMed:8383238). Expressed in astrocytes (PubMed:25297897).
<b>Function</b>	caution:It is uncertain whether Met-1 or Met-5 is the initiator.,function:Orphan receptor. Probable mediator of EBV effects on B lymphocytes or of normal lymphocyte functions. Signals constitutively through G(i)-alpha, but not G(s)-alpha or G(q)-alpha.,induction:By EBV.,similarity:Belongs to the G-protein coupled receptor 1 family.,tissue specificity:Expressed abundantly in lymphoid tissues such as spleen and lymph node, and in B- and T-lymphocytes. Also highly expressed in lung, heart and gastrointestinal tract, and weakly expressed in the urogenital system and brain.,
<b>Background</b>	This gene was identified by the up-regulation of its expression upon Epstein-Barr virus infection of primary B lymphocytes. This gene is predicted to encode a G protein-coupled receptor that is most closely related to the thrombin receptor. Expression of this gene was detected in B-lymphocyte cell lines and lymphoid



tissues but not in T-lymphocyte cell lines or peripheral blood T lymphocytes. The function of this gene is unknown. [provided by RefSeq, Jul 2008],

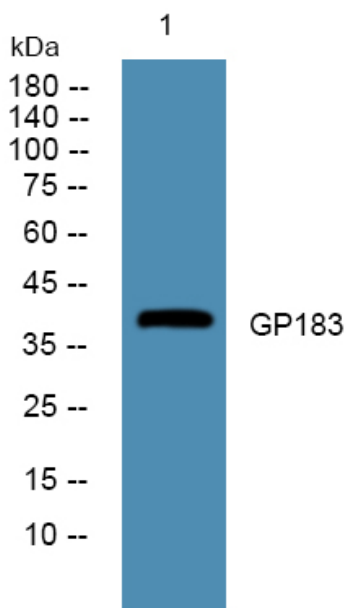
**matters needing attention**

Avoid repeated freezing and thawing!

**Usage suggestions**

This product can be used in immunological reaction related experiments. For more information, please consult technical personnel.

**Products Images**



Western blot analysis of lysates from DU145 cells, primary antibody was diluted at 1:1000, 4° over night