



GPR33 Polyclonal Antibody

Catalog No	YP-Ab-07406
Isotype	IgG
Reactivity	Human;Rat;Mouse;
Applications	WB;ELISA
Gene Name	GPR33
Protein Name	Probable G-protein coupled receptor 33
Immunogen	Synthesized peptide derived from part region of human protein
Specificity	GPR33 Polyclonal Antibody detects endogenous levels of protein.
Formulation	Liquid in PBS containing 50% glycerol, and 0.02% sodium azide.
Source	Polyclonal, Rabbit,IgG
Purification	The antibody was affinity-purified from rabbit antiserum by affinity-chromatography using epitope-specific immunogen.
Dilution	WB 1:500-2000 ELISA 1:5000-20000
Concentration	1 mg/ml
Purity	≥90%
Storage Stability	-20°C/1 year
Synonyms	
Observed Band	36kD
Cell Pathway	Cell membrane; Multi-pass membrane protein.
Tissue Specificity	Expressed in spleen, lung, heart, liver, kidney, pancreas, thymus, gonads and leukocytes.
Function	function:Orphan receptor; could be a chemoattractant receptor.,polymorphism:In most individuals a nonsense mutation transforms the Arg-140 into a premature stop codon. Out of 1217 individuals, 1166 had a stop codon in both alleles, 50 were heterozygous and only one (in the Philippines) had Arg-140 in both alleles. GPR33 has undergone independent pseudogenization in human, chimpanzee, orangutan, siamang and rat. This selective inactivation may be due to its interaction with a putative pathogen that could use GPR33 as a receptor for cell invasion.,similarity:Belongs to the G-protein coupled receptor 1 family.,tissue specificity:Expressed in spleen, lung, heart, liver, kidney, pancreas, thymus, gonads and leukocytes.,
Background	This gene has been identified as an orphan chemoattractant G-protein-coupled receptors (GPCR) pseudogene. Studies have shown that the inactivated gene is present as the predominant allele in the human population. A small fraction of the human population has been found to harbor an intact allele.[provided by RefSeq, Oct 2010],



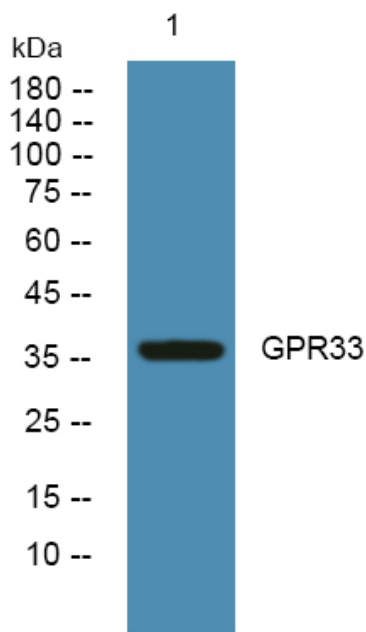
matters needing attention

Avoid repeated freezing and thawing!

Usage suggestions

This product can be used in immunological reaction related experiments. For more information, please consult technical personnel.

Products Images



Western blot analysis of lysates from SW480 cells, primary antibody was diluted at 1:1000, 4°over night