



MCHR1 Polyclonal Antibody

Catalog No	YP-Ab-07415
Isotype	IgG
Reactivity	Human;Mouse;Rat
Applications	WB;ELISA
Gene Name	MCHR1 GPR24 SLC1
Protein Name	Melanin-concentrating hormone receptor 1 (MCH receptor 1) (MCH-R1) (MCHR-1) (G-protein coupled receptor 24) (MCH-1R) (MCH1R) (MCHR) (SLC-1) (Somatostatin receptor-like protein)
Immunogen	Synthesized peptide derived from part region of human protein
Specificity	MCHR1 Polyclonal Antibody detects endogenous levels of protein.
Formulation	Liquid in PBS containing 50% glycerol, and 0.02% sodium azide.
Source	Polyclonal, Rabbit,IgG
Purification	The antibody was affinity-purified from rabbit antiserum by affinity-chromatography using epitope-specific immunogen.
Dilution	WB 1:500-2000 ELISA 1:5000-20000
Concentration	1 mg/ml
Purity	≥90%
Storage Stability	-20°C/1 year
Synonyms	
Observed Band	46kD
Cell Pathway	Cell membrane; Multi-pass membrane protein.
Tissue Specificity	Highest level in brain, particularly in the frontal cortex and hypothalamus, lower levels in the liver and heart.
Function	caution:It is uncertain whether Met-1, Met-6 or Met-70 is the initiator.,function:Receptor for melanin-concentrating hormone, coupled to both G proteins that inhibit adenylyl cyclase and G proteins that activate phosphoinositide hydrolysis.,similarity:Belongs to the G-protein coupled receptor 1 family.,subunit:Interacts with NCDN.,tissue specificity:Highest level in brain, particularly in the frontal cortex and hypothalamus, lower levels in the liver and heart.,
Background	melanin concentrating hormone receptor 1(MCHR1) Homo sapiens The protein encoded by this gene, a member of the G protein-coupled receptor family 1, is an integral plasma membrane protein which binds melanin-concentrating hormone. The encoded protein can inhibit cAMP accumulation and stimulate intracellular calcium flux, and is probably involved in the neuronal regulation of food consumption. Although structurally similar to somatostatin receptors, this protein does not seem to bind somatostatin. [provided by RefSeq, Jul 2008],



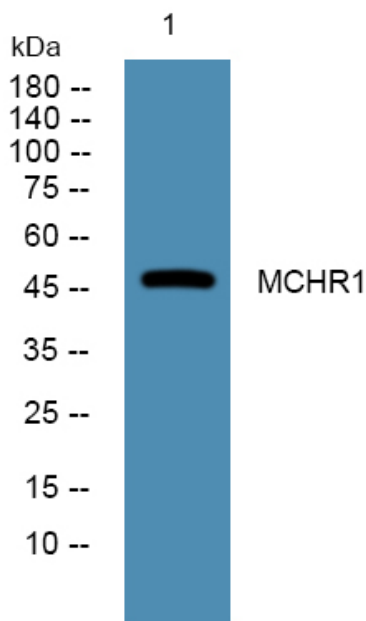
matters needing attention

Avoid repeated freezing and thawing!

Usage suggestions

This product can be used in immunological reaction related experiments. For more information, please consult technical personnel.

Products Images



Western blot analysis of lysates from K562 cells, primary antibody was diluted at 1:1000, 4°over night