



OR3A4 Polyclonal Antibody

Catalog No	YP-Ab-07477
Isotype	IgG
Reactivity	Human;Rat;Mouse;
Applications	WB;ELISA
Gene Name	OR3A4P OR3A4 OR3A5P
Protein Name	Putative olfactory receptor 3A4 (Olfactory receptor 17-24) (OR17-24) (Olfactory receptor 3A5)
Immunogen	Synthesized peptide derived from part region of human protein
Specificity	OR3A4 Polyclonal Antibody detects endogenous levels of protein.
Formulation	Liquid in PBS containing 50% glycerol, and 0.02% sodium azide.
Source	Polyclonal, Rabbit,IgG
Purification	The antibody was affinity-purified from rabbit antiserum by affinity-chromatography using epitope-specific immunogen.
Dilution	WB 1:500-2000 ELISA 1:5000-20000
Concentration	1 mg/ml
Purity	≥90%
Storage Stability	-20°C/1 year
Synonyms	
Observed Band	38kD
Cell Pathway	Cell membrane; Multi-pass membrane protein.
Tissue Specificity	
Function	
Background	Olfactory receptors interact with odorant molecules in the nose, to initiate a neuronal response that triggers the perception of a smell. The olfactory receptor proteins are members of a large family of G-protein-coupled receptors (GPCR) arising from single coding-exon genes. Olfactory receptors share a 7-transmembrane domain structure with many neurotransmitter and hormone receptors and are responsible for the recognition and G protein-mediated transduction of odorant signals. The olfactory receptor gene family is the largest in the genome. The nomenclature assigned to the olfactory receptor genes and proteins for this organism is independent of other organisms. This olfactory receptor gene is transcribed and contains an intact ORF, but it is predicted to be a pseudogene due to a poorly conserved 7-transmembrane domain structure. [provided by RefSeq, Sep 2008]



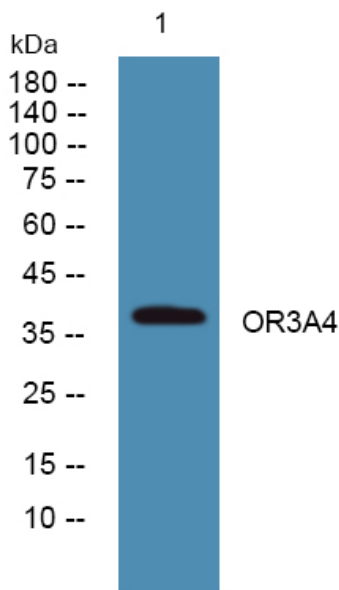
matters needing attention

Avoid repeated freezing and thawing!

Usage suggestions

This product can be used in immunological reaction related experiments. For more information, please consult technical personnel.

Products Images



Western blot analysis of lysates from K562 cells, primary antibody was diluted at 1:1000, 4°over night