



P2Y10 Polyclonal Antibody

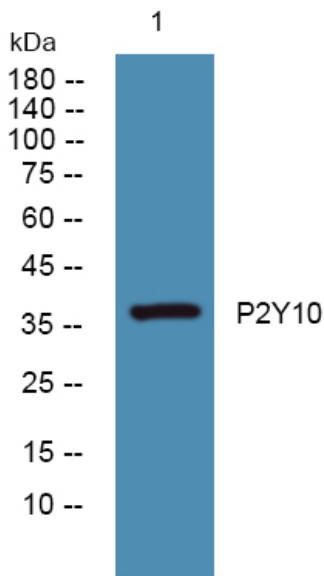
Catalog No	YP-Ab-07532
Isotype	IgG
Reactivity	Human;Mouse
Applications	WB;ELISA
Gene Name	P2RY10
Protein Name	Putative P2Y purinoceptor 10 (P2Y10) (P2Y-like receptor)
Immunogen	Synthesized peptide derived from human protein . at AA range: 80-160
Specificity	P2Y10 Polyclonal Antibody detects endogenous levels of protein.
Formulation	Liquid in PBS containing 50% glycerol, and 0.02% sodium azide.
Source	Polyclonal, Rabbit,IgG
Purification	The antibody was affinity-purified from rabbit antiserum by affinity-chromatography using epitope-specific immunogen.
Dilution	WB 1:500-2000 ELISA 1:5000-20000
Concentration	1 mg/ml
Purity	≥90%
Storage Stability	-20°C/1 year
Synonyms	
Observed Band	37kD
Cell Pathway	Cell membrane; Multi-pass membrane protein.
Tissue Specificity	Weakly expressed in blood leukocytes.
Function	developmental stage:Up-regulated during promyelocytic cell differentiation along the monocytic pathway, but not during granulocytic differentiation.;function:Putative receptor for purines coupled to G-proteins.;similarity:Belongs to the G-protein coupled receptor 1 family.;tissue specificity:Weakly expressed in blood leukocytes.;
Background	The protein encoded by this gene belongs to the family of G-protein coupled receptors that are preferentially activated by adenosine and uridine nucleotides. There is a pseudogene for this gene nearby on chromosome X. Multiple alternatively spliced transcripts have been observed. [provided by RefSeq, Apr 2016],
matters needing attention	Avoid repeated freezing and thawing!



Usage suggestions

This product can be used in immunological reaction related experiments. For more information, please consult technical personnel.

Products Images



Western blot analysis of lysates from K562 cells, primary antibody was diluted at 1:1000, 4° over night