



PF2R Polyclonal Antibody

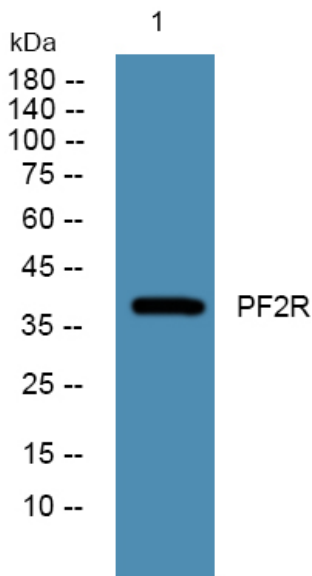
| | |
|----------------------------------|---|
| Catalog No | YP-Ab-07536 |
| Isotype | IgG |
| Reactivity | Human;Rat;Mouse |
| Applications | WB;ELISA |
| Gene Name | PTGFR |
| Protein Name | Prostaglandin F2-alpha receptor (PGF receptor) (PGF2-alpha receptor) (Prostanoid FP receptor) |
| Immunogen | Synthesized peptide derived from human protein . at AA range: 40-120 |
| Specificity | PF2R Polyclonal Antibody detects endogenous levels of protein. |
| Formulation | Liquid in PBS containing 50% glycerol, and 0.02% sodium azide. |
| Source | Polyclonal, Rabbit,IgG |
| Purification | The antibody was affinity-purified from rabbit antiserum by affinity-chromatography using epitope-specific immunogen. |
| Dilution | WB 1:500-2000 ELISA 1:5000-20000 |
| Concentration | 1 mg/ml |
| Purity | ≥90% |
| Storage Stability | -20°C/1 year |
| Synonyms | |
| Observed Band | 39kD |
| Cell Pathway | Cell membrane; Multi-pass membrane protein. |
| Tissue Specificity | Eye. |
| Function | function:Receptor for prostaglandin F2-alpha (PGF2-alpha). The activity of this receptor is mediated by G proteins which activate a phosphatidylinositol-calcium second messenger system. Initiates luteolysis in the corpus luteum.,similarity:Belongs to the G-protein coupled receptor 1 family., |
| Background | prostaglandin F receptor(PTGFR) Homo sapiens The protein encoded by this gene is member of the G-protein coupled receptor family. This protein is a receptor for prostaglandin F2-alpha (PGF2-alpha), which is known to be a potent luteolytic agent, and may also be involved in modulating intraocular pressure and smooth muscle contraction in uterus. Knockout studies in mice suggest that the interaction of PGF2-alpha with this receptor may initiate parturition in ovarian luteal cells and thus induce luteolysis. Two transcript variants encoding different isoforms have been found for this gene. [provided by RefSeq, Jul 2008], |
| matters needing attention | Avoid repeated freezing and thawing! |



Usage suggestions

This product can be used in immunological reaction related experiments. For more information, please consult technical personnel.

Products Images



Western blot analysis of lysates from DU145 cells, primary antibody was diluted at 1:1000, 4° over night