

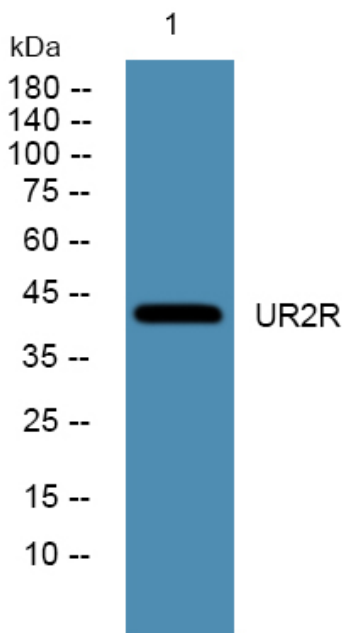


UR2R Polyclonal Antibody

Catalog No	YP-Ab-07558
Isotype	IgG
Reactivity	Human;Rat;Mouse
Applications	WB;ELISA
Gene Name	UTS2R GPR14
Protein Name	Urotensin-2 receptor (UR-2-R) (G-protein coupled receptor 14) (Urotensin II receptor) (UR-II-R)
Immunogen	Synthesized peptide derived from human protein . at AA range: 130-210
Specificity	UR2R Polyclonal Antibody detects endogenous levels of protein.
Formulation	Liquid in PBS containing 50% glycerol, and 0.02% sodium azide.
Source	Polyclonal, Rabbit,IgG
Purification	The antibody was affinity-purified from rabbit antiserum by affinity-chromatography using epitope-specific immunogen.
Dilution	WB 1:500-2000 ELISA 1:5000-20000
Concentration	1 mg/ml
Purity	≥90%
Storage Stability	-20°C/1 year
Synonyms	
Observed Band	42kD
Cell Pathway	Cell membrane; Multi-pass membrane protein.
Tissue Specificity	Most abundant expression in the heart and pancreas.
Function	function:High affinity receptor for urotensin-2 and urotensin-2B. The activity of this receptor is mediated by a G-protein that activate a phosphatidylinositol-calcium second messenger system.,similarity:Belongs to the G-protein coupled receptor 1 family.,tissue specificity:Most abundant expression in the heart and pancreas.,
Background	function:High affinity receptor for urotensin-2 and urotensin-2B. The activity of this receptor is mediated by a G-protein that activate a phosphatidylinositol-calcium second messenger system.,similarity:Belongs to the G-protein coupled receptor 1 family.,tissue specificity:Most abundant expression in the heart and pancreas.,
matters needing attention	Avoid repeated freezing and thawing!
Usage suggestions	This product can be used in immunological reaction related experiments. For more information, please consult technical personnel.



Products Images



Western blot analysis of lysates from SH-SY5Y cells, primary antibody was diluted at 1:1000, 4° over night