



MRGX2 Polyclonal Antibody

Catalog No	YP-Ab-07565
Isotype	IgG
Reactivity	Human;Mouse
Applications	WB;ELISA
Gene Name	MRGPRX2 MRGX2
Protein Name	Mas-related G-protein coupled receptor member X2
Immunogen	Synthesized peptide derived from human protein . at AA range: 250-330
Specificity	MRGX2 Polyclonal Antibody detects endogenous levels of protein.
Formulation	Liquid in PBS containing 50% glycerol, and 0.02% sodium azide.
Source	Polyclonal, Rabbit,IgG
Purification	The antibody was affinity-purified from rabbit antiserum by affinity-chromatography using epitope-specific immunogen.
Dilution	WB 1:500-2000 ELISA 1:5000-20000
Concentration	1 mg/ml
Purity	≥90%
Storage Stability	-20°C/1 year
Synonyms	
Observed Band	36kD
Cell Pathway	Cell membrane; Multi-pass membrane protein .
Tissue Specificity	Mainly expressed in mast cells. Has a limited expression profile, both peripheral and within the central nervous system, with highest levels in dorsal root ganglion (PubMed:12915402). Detected in blood vessels, scattered lymphocytes, and gastrointestinal ganglia (at protein level) (PubMed:16161007).
Function	function:Orphan receptor. Probably involved in the function of nociceptive neurons. May regulate nociceptor function and/or development, including the sensation or modulation of pain. Cortistatin-14 seems to be a high potency ligand at this receptor. Cortistatin has several biological functions including roles in sleep regulation locomotor activity, and cortical function. In receptor-expressing cells, cortistatin-stimulated increases in intracellular Ca(2+) but had no effect on basal or forskolin-stimulated cAMP levels, suggesting that this receptor is G(q)-coupled.,similarity:Belongs to the G-protein coupled receptor 1 family. Mas subfamily.,tissue specificity:Has a limited expression profile, both peripheral and within the central nervous system, with highest levels in dorsal root ganglion.,
Background	function:Orphan receptor. Probably involved in the function of nociceptive neurons. May regulate nociceptor function and/or development, including the sensation or modulation of pain. Cortistatin-14 seems to be a high potency ligand



at this receptor. Cortistatin has several biological functions including roles in sleep regulation locomotor activity, and cortical function. In receptor-expressing cells, cortistatin-stimulated increases in intracellular Ca(2+) but had no effect on basal or forskolin-stimulated cAMP levels, suggesting that this receptor is G(q)-coupled.,similarity:Belongs to the G-protein coupled receptor 1 family. Mas subfamily.,tissue specificity:Has a limited expression profile, both peripheral and within the central nervous system, with highest levels in dorsal root ganglion.,

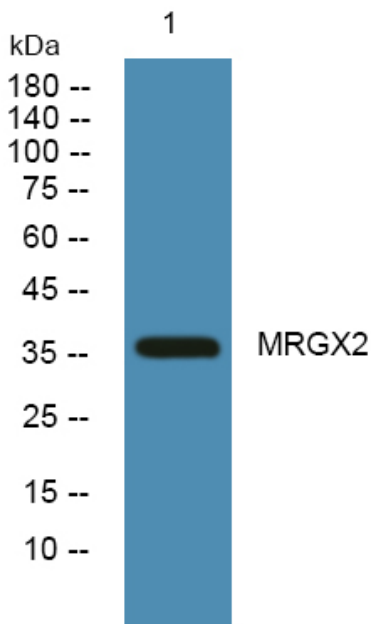
matters needing attention

Avoid repeated freezing and thawing!

Usage suggestions

This product can be used in immunological reaction related experiments. For more information, please consult technical personnel.

Products Images



Western blot analysis of lysates from DU145 cells, primary antibody was diluted at 1:1000, 4° over night