



NPY6R Polyclonal Antibody

Catalog No	YP-Ab-07643
Isotype	IgG
Reactivity	Human;Mouse
Applications	WB;ELISA
Gene Name	NPY6R NPY1RL Y2B
Protein Name	Putative neuropeptide Y receptor type 6 (NPY6-R) (NPY Y1-like receptor) (Putative pancreatic polypeptide receptor 2) (PP2)
Immunogen	Synthesized peptide derived from human protein . at AA range: 190-270
Specificity	NPY6R Polyclonal Antibody detects endogenous levels of protein.
Formulation	Liquid in PBS containing 50% glycerol, and 0.02% sodium azide.
Source	Polyclonal, Rabbit,IgG
Purification	The antibody was affinity-purified from rabbit antiserum by affinity-chromatography using epitope-specific immunogen.
Dilution	WB 1:500-2000 ELISA 1:5000-20000
Concentration	1 mg/ml
Purity	≥90%
Storage Stability	-20°C/1 year
Synonyms	
Observed Band	31kD
Cell Pathway	Membrane ; Multi-pass membrane protein .
Tissue Specificity	Expressed in heart, skeletal muscle, gastrointestinal tissues, spleen, brain and adrenal glands.
Function	caution:Could be the product of a pseudogene. According to PubMed:97066888, PubMed:97066971 and PubMed:9013614, the human NPY6R gene is an expressed pseudogene containing a premature stop codon and encoding a non-functional truncated protein missing the last transmembrane domain. A single base pair deletion relative to the mouse ortholog, results in a truncated protein lacking the seventh transmembrane domain.,function:When expressed, is unable to bind pancreatic polypeptide (PP), neuropeptide Y (NPY), or peptide YY (PYY), suggesting that either it is functionally inactive or that it may have acquired a pancreatic polypeptide-independent function.,similarity:Belongs to the G-protein coupled receptor 1 family.,tissue specificity:Expressed in heart, skeletal muscle, gastrointestinal tissues, spleen, brain and adrenal glands.,
Background	caution:Could be the product of a pseudogene. According to PubMed:97066888, PubMed:97066971 and PubMed:9013614, the human NPY6R gene is an expressed pseudogene containing a premature stop codon and encoding a non-functional truncated protein missing the last transmembrane domain. A single



base pair deletion relative to the mouse ortholog, results in a truncated protein lacking the seventh transmembrane domain.,function:When expressed, is unable to bind pancreatic polypeptide (PP), neuropeptide Y (NPY), or peptide YY (PYY), suggesting that either it is functionally inactive or that it may have acquired a pancreatic polypeptide-independent function.,similarity:Belongs to the G-protein coupled receptor 1 family.,tissue specificity:Expressed in heart, skeletal muscle, gastrointestinal tissues, spleen, brain and adrenal glands.,

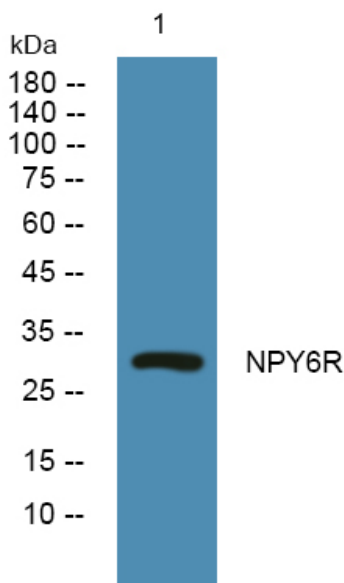
matters needing attention

Avoid repeated freezing and thawing!

Usage suggestions

This product can be used in immunological reaction related experiments. For more information, please consult technical personnel.

Products Images



Western blot analysis of lysates from K562 cells, primary antibody was diluted at 1:1000, 4° over night