



ABI3 Polyclonal Antibody

| | |
|---------------------------|--|
| Catalog No | YP-Ab-07700 |
| Isotype | IgG |
| Reactivity | Human;Mouse |
| Applications | WB;ELISA |
| Gene Name | ABI3 NESH |
| Protein Name | ABI gene family member 3 (New molecule including SH3) (Nesh) |
| Immunogen | Synthesized peptide derived from part region of human protein AA range: 286-336 |
| Specificity | ABI3 Polyclonal Antibody detects endogenous levels of protein. |
| Formulation | Liquid in PBS containing 50% glycerol, and 0.02% sodium azide. |
| Source | Polyclonal, Rabbit,IgG |
| Purification | The antibody was affinity-purified from rabbit antiserum by affinity-chromatography using epitope-specific immunogen. |
| Dilution | WB 1:500-2000 ELISA 1:5000-20000 |
| Concentration | 1 mg/ml |
| Purity | ≥90% |
| Storage Stability | -20°C/1 year |
| Synonyms | |
| Observed Band | 40kD |
| Cell Pathway | Cytoplasm . Colocalizes with PAK2 at leading edge of cells. |
| Tissue Specificity | Expressed in heart, lung, liver, pancreas, kidney, placenta and at low levels in brain and skeletal muscle. |
| Function | function:May inhibit tumor metastasis (By similarity). In vitro, reduces cell motility.,similarity:Belongs to the ABI family.,similarity:Contains 1 SH3 domain.,subcellular location:Colocalizes with PAK2 at leading edge of cells.,subunit:May interact with PAK1 and PAK2. Probably interacts with TARSH.,tissue specificity:Expressed in heart, lung, liver, pancreas, kidney, placenta and at low levels in brain and skeletal muscle., |
| Background | This gene encodes a member of an adaptor protein family. Members of this family encode proteins containing a homeobox homology domain, proline rich region and Src-homology 3 (SH3) domain, and are components of the Abi/WAVE complex which regulates actin polymerization. The encoded protein inhibits ectopic metastasis of tumor cells as well as cell migration. This may be accomplished through interaction with p21-activated kinase. Alternative splicing results in multiple transcript variants. [provided by RefSeq, Sep 2013], |



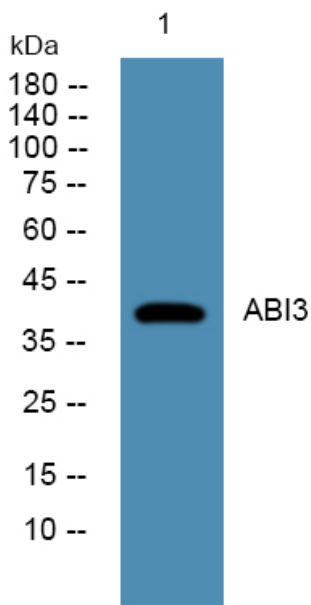
matters needing attention

Avoid repeated freezing and thawing!

Usage suggestions

This product can be used in immunological reaction related experiments. For more information, please consult technical personnel.

Products Images



Western blot analysis of lysates from PC12 cells, primary antibody was diluted at 1:1000, 4°over night