

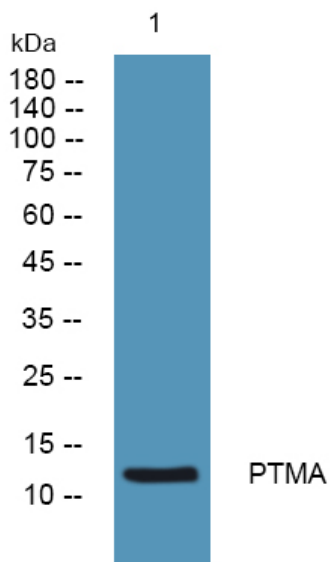


PTMA Polyclonal Antibody

Catalog No	YP-Ab-07720
Isotype	IgG
Reactivity	Human;Mouse
Applications	WB;ELISA
Gene Name	PTMA TMSA
Protein Name	Prothymosin alpha [Cleaved into: Thymosin alpha-1]
Immunogen	Synthesized peptide derived from part region of human protein AA range: 1-50
Specificity	PTMA Polyclonal Antibody detects endogenous levels of protein.
Formulation	Liquid in PBS containing 50% glycerol, and 0.02% sodium azide.
Source	Polyclonal, Rabbit,IgG
Purification	The antibody was affinity-purified from rabbit antiserum by affinity-chromatography using epitope-specific immunogen.
Dilution	WB 1:500-2000 ELISA 1:5000-20000
Concentration	1 mg/ml
Purity	≥90%
Storage Stability	-20°C/1 year
Synonyms	
Observed Band	12kD
Cell Pathway	Nucleus.
Tissue Specificity	Blood,Brain,Cerebellum,Cervix,Epithelium,Fetal thymus,Liver,Lung,Pancreas,PNS,Prima
Function	function:Prothymosin alpha may mediate immune function by conferring resistance to certain opportunistic infections.,PTM:Covalently linked to a small RNA of about 20 nucleotides.,similarity:Belongs to the pro/parathymosin family.,
Background	function:Prothymosin alpha may mediate immune function by conferring resistance to certain opportunistic infections.,PTM:Covalently linked to a small RNA of about 20 nucleotides.,similarity:Belongs to the pro/parathymosin family.,
matters needing attention	Avoid repeated freezing and thawing!
Usage suggestions	This product can be used in immunological reaction related experiments. For more information, please consult technical personnel.



Products Images



Western blot analysis of lysates from Jarkat cells,
primary antibody was diluted at 1:1000, 4° over night