



CEGT Polyclonal Antibody

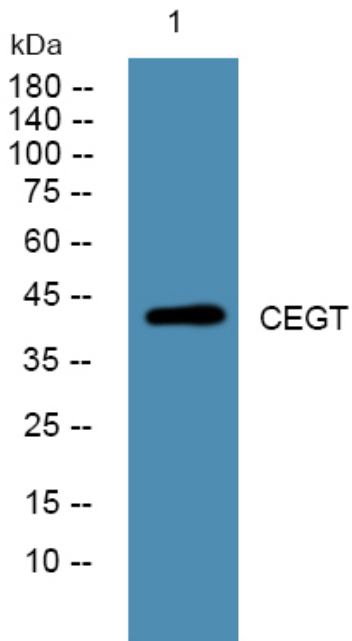
Catalog No	YP-Ab-07728
Isotype	IgG
Reactivity	Human;Mouse;Rat
Applications	WB;ELISA
Gene Name	UGCG
Protein Name	Ceramide glucosyltransferase (EC 2.4.1.80) (GLCT-1) (Glucosylceramide synthase) (GCS) (UDP-glucose ceramide glucosyltransferase) (UDP-glucose:N-acylsphingosine D-glucosyltransferase)
Immunogen	Synthesized peptide derived from part region of human protein
Specificity	CEGT Polyclonal Antibody detects endogenous levels of protein.
Formulation	Liquid in PBS containing 50% glycerol, and 0.02% sodium azide.
Source	Polyclonal, Rabbit,IgG
Purification	The antibody was affinity-purified from rabbit antiserum by affinity-chromatography using epitope-specific immunogen.
Dilution	WB 1:500-2000 ELISA 1:5000-20000
Concentration	1 mg/ml
Purity	≥90%
Storage Stability	-20°C/1 year
Synonyms	
Observed Band	43kD
Cell Pathway	Golgi apparatus membrane ; Multi-pass membrane protein .
Tissue Specificity	Found in all tissues examined.
Function	catalytic activity:UDP-glucose + N-acylsphingosine = UDP + D-glucosyl-N-acylsphingosine.,function:Catalyzes the first glycosylation step in glycosphingolipid biosynthesis, the transfer of glucose to ceramide. May also serve as a "flippase" .,online information:GlycoGene database,pathway:Lipid metabolism; sphingolipid metabolism.,similarity:Belongs to the glucosyltransferase 2 family.,tissue specificity:Found in all tissues examined.,
Background	This gene encodes an enzyme that catalyzes the first glycosylation step in the biosynthesis of glycosphingolipids, which are membrane components containing lipid and sugar moieties. The product of this reaction is glucosylceramide, which is the core structure of many glycosphingolipids. [provided by RefSeq, Dec 2014],
matters needing attention	Avoid repeated freezing and thawing!



Usage suggestions

This product can be used in immunological reaction related experiments. For more information, please consult technical personnel.

Products Images



Western blot analysis of lysates from K562 cells, primary antibody was diluted at 1:1000, 4° over night