



# PLIN2 Polyclonal Antibody

<b>Catalog No</b>	YP-Ab-07732
<b>Isotype</b>	IgG
<b>Reactivity</b>	Human;Rat;Mouse;
<b>Applications</b>	WB;ELISA
<b>Gene Name</b>	PLIN2 ADFP
<b>Protein Name</b>	Perilipin-2 (Adipophilin) (Adipose differentiation-related protein) (ADRP)
<b>Immunogen</b>	Synthesized peptide derived from part region of human protein
<b>Specificity</b>	PLIN2 Polyclonal Antibody detects endogenous levels of protein.
<b>Formulation</b>	Liquid in PBS containing 50% glycerol, and 0.02% sodium azide.
<b>Source</b>	Polyclonal, Rabbit,IgG
<b>Purification</b>	The antibody was affinity-purified from rabbit antiserum by affinity-chromatography using epitope-specific immunogen.
<b>Dilution</b>	WB 1:500-2000 ELISA 1:5000-20000
<b>Concentration</b>	1 mg/ml
<b>Purity</b>	≥90%
<b>Storage Stability</b>	-20°C/1 year
<b>Synonyms</b>	
<b>Observed Band</b>	48kD
<b>Cell Pathway</b>	Membrane ; Peripheral membrane protein . Lipid droplet .
<b>Tissue Specificity</b>	Milk lipid globules.
<b>Function</b>	lipid transport, response to organic substance, lipid localization, response to organic cyclic substance, monocarboxylic acid transport, organic acid transport, fatty acid transport, long-chain fatty acid transport, lipid storage, response to drug, carboxylic acid transport,
<b>Background</b>	The protein encoded by this gene belongs to the perilipin family, members of which coat intracellular lipid storage droplets. This protein is associated with the lipid globule surface membrane material, and maybe involved in development and maintenance of adipose tissue. However, it is not restricted to adipocytes as previously thought, but is found in a wide range of cultured cell lines, including fibroblasts, endothelial and epithelial cells, and tissues, such as lactating mammary gland, adrenal cortex, Sertoli and Leydig cells, and hepatocytes in alcoholic liver cirrhosis, suggesting that it may serve as a marker of lipid accumulation in diverse cell types and diseases. Alternatively spliced transcript variants have been found for this gene. [provided by RefSeq, Mar 2011],



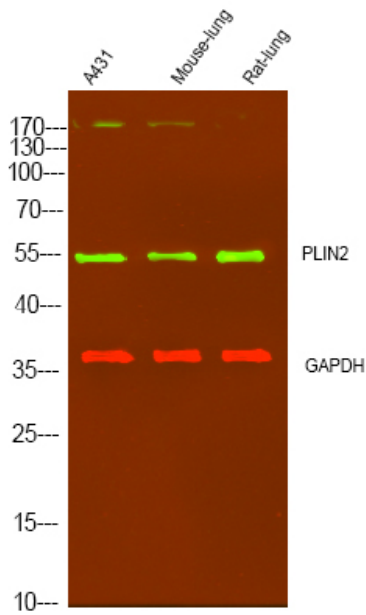
**matters needing attention**

Avoid repeated freezing and thawing!

**Usage suggestions**

This product can be used in immunological reaction related experiments. For more information, please consult technical personnel.

**Products Images**



Western Blot analysis of various cell lysis. Primary Antibody was diluted at 1:1000. Secondary antibody(catalog#:RS23920) was diluted at 1:10000.