



# LRIG1 Polyclonal Antibody

<b>Catalog No</b>	YP-Ab-07751
<b>Isotype</b>	IgG
<b>Reactivity</b>	Human;Mouse
<b>Applications</b>	WB;ELISA
<b>Gene Name</b>	LRIG1 LIG1
<b>Protein Name</b>	Leucine-rich repeats and immunoglobulin-like domains protein 1 (LIG-1)
<b>Immunogen</b>	Synthesized peptide derived from part region of human protein
<b>Specificity</b>	LRIG1 Polyclonal Antibody detects endogenous levels of protein.
<b>Formulation</b>	Liquid in PBS containing 50% glycerol, and 0.02% sodium azide.
<b>Source</b>	Polyclonal, Rabbit,IgG
<b>Purification</b>	The antibody was affinity-purified from rabbit antiserum by affinity-chromatography using epitope-specific immunogen.
<b>Dilution</b>	WB 1:500-2000 ELISA 1:5000-20000
<b>Concentration</b>	1 mg/ml
<b>Purity</b>	≥90%
<b>Storage Stability</b>	-20°C/1 year
<b>Synonyms</b>	
<b>Observed Band</b>	120kD
<b>Cell Pathway</b>	Cell membrane ; Single-pass type I membrane protein .
<b>Tissue Specificity</b>	Widely expressed.
<b>Function</b>	domain:The LRRs and the Ig-domains are each sufficient for EGFR/ERBB1 binding. This interaction is abolished only when these two domains are deleted.,function:Act as a feedback negative regulator of signaling by receptor tyrosine kinases, through a mechanism that involves enhancement of receptor ubiquitination and accelerated intracellular degradation.,induction:By EGF.,similarity:Contains 17 LRR (leucine-rich) repeats.,similarity:Contains 3 Ig-like C2-type (immunoglobulin-like) domains.,subunit:Interacts with EGFR/ERBB1, ERBB2, ERBB3 and ERBB4.,tissue specificity:Widely expressed.,
<b>Background</b>	domain:The LRRs and the Ig-domains are each sufficient for EGFR/ERBB1 binding. This interaction is abolished only when these two domains are deleted.,function:Act as a feedback negative regulator of signaling by receptor tyrosine kinases, through a mechanism that involves enhancement of receptor ubiquitination and accelerated intracellular degradation.,induction:By EGF.,similarity:Contains 17 LRR (leucine-rich) repeats.,similarity:Contains 3 Ig-like C2-type (immunoglobulin-like) domains.,subunit:Interacts with



EGFR/ERBB1, ERBB2, ERBB3 and ERBB4.,tissue specificity:Widely expressed.,

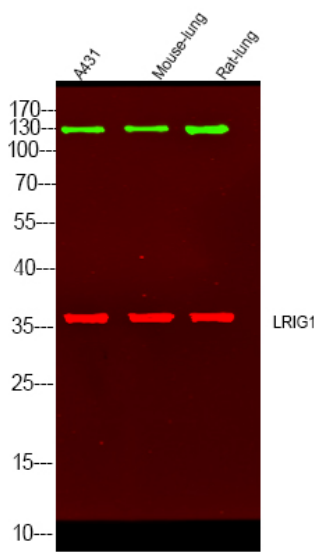
**matters needing attention**

Avoid repeated freezing and thawing!

**Usage suggestions**

This product can be used in immunological reaction related experiments. For more information, please consult technical personnel.

**Products Images**



Western Blot analysis of varius cell lysis. Primary Antibody was diluted at 1:1000. Secondary antibody(catalog#:RS23920 was diluted at 1:10000