



PCY1A Polyclonal Antibody

Catalog No	YP-Ab-07755
Isotype	IgG
Reactivity	Human;Mouse;Rat
Applications	WB;ELISA
Gene Name	PCYT1A CTPCT PCYT1
Protein Name	Choline-phosphate cytidyltransferase A (EC 2.7.7.15) (CCT-alpha) (CTP:phosphocholine cytidyltransferase A) (CCT A) (CT A) (Phosphorylcholine transferase A)
Immunogen	Synthesized peptide derived from part region of human protein
Specificity	PCY1A Polyclonal Antibody detects endogenous levels of protein.
Formulation	Liquid in PBS containing 50% glycerol, and 0.02% sodium azide.
Source	Polyclonal, Rabbit,IgG
Purification	The antibody was affinity-purified from rabbit antiserum by affinity-chromatography using epitope-specific immunogen.
Dilution	WB 1:500-2000 ELISA 1:5000-20000
Concentration	1 mg/ml
Purity	≥90%
Storage Stability	-20°C/1 year
Synonyms	
Observed Band	40kD
Cell Pathway	Cytoplasm, cytosol . Membrane ; Peripheral membrane protein . Endoplasmic reticulum . Nucleus . It can interconvert between an inactive cytosolic form and an active membrane-bound form. .
Tissue Specificity	Brain, placenta, liver, fetal and adult lung.
Function	catalytic activity:CTP + choline phosphate = diphosphate + CDP-choline.,enzyme regulation:By phosphorylation.,function:Controls phosphatidylcholine synthesis.,pathway:Phospholipid metabolism; phosphatidylcholine biosynthesis; phosphatidylcholine from phosphocholine: step 1/2.,PTM:The serine residues of the C-terminus are phosphorylated. The inactive soluble form is stabilized by phosphorylation, the active membrane bound form is promoted by anionic lipids or diacylglycerol, and is stabilized by dephosphorylation.,similarity:Belongs to the cytidyltransferase family.,subcellular location:It can interconvert between an inactive cytosolic form and an active membrane-bound form.,subunit:Homodimer; disulfide-linked.,
Background	This gene belongs to the cytidyltransferase family and is involved in the regulation of phosphatidylcholine biosynthesis. Mutations in this gene are associated with spondylometaphyseal dysplasia with cone-rod dystrophy.



Alternatively spliced transcript variants have been found for this gene. [provided by RefSeq, Aug 2015],

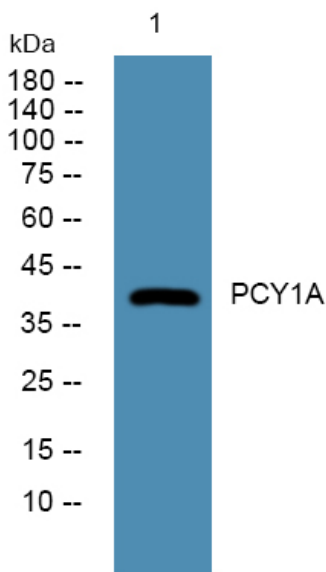
matters needing attention

Avoid repeated freezing and thawing!

Usage suggestions

This product can be used in immunological reaction related experiments. For more information, please consult technical personnel.

Products Images



Western blot analysis of lysates from A431 cells, primary antibody was diluted at 1:1000, 4° over night