



LSHB Polyclonal Antibody

Catalog No	YP-Ab-07775
Isotype	IgG
Reactivity	Human;Mouse;Rat
Applications	WB;ELISA
Gene Name	LHB
Protein Name	Lutropin subunit beta (Lutropin beta chain) (Luteinizing hormone subunit beta) (LH-B) (LSH-B) (LSH-beta)
Immunogen	Synthesized peptide derived from part region of human protein
Specificity	LSHB Polyclonal Antibody detects endogenous levels of protein.
Formulation	Liquid in PBS containing 50% glycerol, and 0.02% sodium azide.
Source	Polyclonal, Rabbit,IgG
Purification	The antibody was affinity-purified from rabbit antiserum by affinity-chromatography using epitope-specific immunogen.
Dilution	WB 1:500-2000 ELISA 1:5000-20000
Concentration	1 mg/ml
Purity	≥90%
Storage Stability	-20°C/1 year
Synonyms	
Observed Band	15kD
Cell Pathway	Secreted.
Tissue Specificity	Pituitary gland.
Function	disease:Defects in LHB are a cause of hypogonadism [MIM:152780]. Hypogonadism is characterized by infertility and pseudohermaphroditism.,function:Promotes spermatogenesis and ovulation by stimulating the testes and ovaries to synthesize steroids.,online information:Luteinizing hormone entry,online information:The Singapore human mutation and polymorphism database,similarity:Belongs to the glycoprotein hormones subunit beta family.,subunit:Heterodimer of a common alpha chain and a unique beta chain which confers biological specificity to thyrotropin, lutropin, follitropin and gonadotropin.,tissue specificity: Pituitary gland.,
Background	This gene is a member of the glycoprotein hormone beta chain family and encodes the beta subunit of luteinizing hormone (LH). Glycoprotein hormones are heterodimers consisting of a common alpha subunit and an unique beta subunit which confers biological specificity. LH is expressed in the pituitary gland and promotes spermatogenesis and ovulation by stimulating the testes and ovaries to synthesize steroids. The genes for the beta chains of chorionic gonadotropin and



for luteinizing hormone are contiguous on chromosome 19q13.3. Mutations in this gene are associated with hypogonadism which is characterized by infertility and pseudohermaphroditism. [provided by RefSeq, Jul 2008],

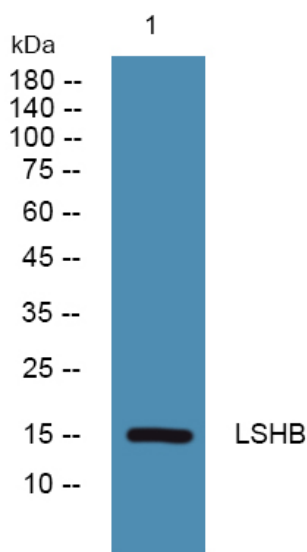
matters needing attention

Avoid repeated freezing and thawing!

Usage suggestions

This product can be used in immunological reaction related experiments. For more information, please consult technical personnel.

Products Images



Western blot analysis of lysates from K562 cells, primary antibody was diluted at 1:1000, 4° over night