

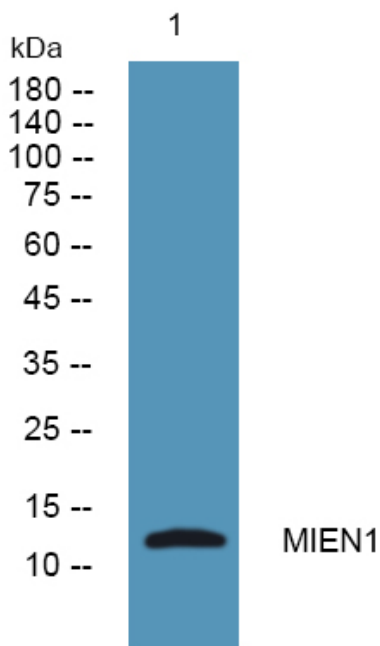


MIEN1 Polyclonal Antibody

Catalog No	YP-Ab-07848
Isotype	IgG
Reactivity	Human;Mouse
Applications	WB;ELISA
Gene Name	MIEN1 C17orf37 RDX12 XTP4
Protein Name	Migration and invasion enhancer 1 (HBV X-transactivated gene 4 protein) (HBV XAg-transactivated protein 4) (Protein C35)
Immunogen	Synthesized peptide derived from part region of human protein AA range: 1-50
Specificity	MIEN1 Polyclonal Antibody detects endogenous levels of protein.
Formulation	Liquid in PBS containing 50% glycerol, and 0.02% sodium azide.
Source	Polyclonal, Rabbit,IgG
Purification	The antibody was affinity-purified from rabbit antiserum by affinity-chromatography using epitope-specific immunogen.
Dilution	WB 1:500-2000 ELISA 1:5000-20000
Concentration	1 mg/ml
Purity	≥90%
Storage Stability	-20°C/1 year
Synonyms	
Observed Band	12kD
Cell Pathway	Cytoplasm, cytosol. Cell membrane; Lipid-anchor; Cytoplasmic side. Concentrates at the leading edge of migrating cells. Localizes outside membrane raft regions.
Tissue Specificity	Among normal tissues, present only in Leydig cells. Strongly up-regulated in breast cancers and in brain cancer distant metastasis (at protein level). Up-regulated in prostate cancer cells and in the higher grades of prostate adenocarcinoma (at protein level).
Function	function:May be involved in a redox-related process .,similarity:Belongs to the SeiWTH family.,
Background	function:May be involved in a redox-related process .,similarity:Belongs to the SeiWTH family.,
matters needing attention	Avoid repeated freezing and thawing!
Usage suggestions	This product can be used in immunological reaction related experiments. For more information, please consult technical personnel.



Products Images



Western blot analysis of lysates from Jarkat cells,
primary antibody was diluted at 1:1000, 4° over night