



SUN5 Polyclonal Antibody

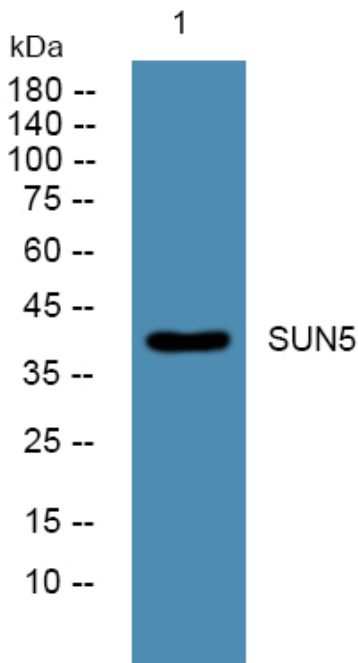
Catalog No	YP-Ab-07859
Isotype	IgG
Reactivity	Human;Rat;Mouse;
Applications	WB;ELISA
Gene Name	SUN5 SPAG4L TSARG4
Protein Name	SUN domain-containing protein 5 (Sad1 and UNC84 domain-containing protein 5) (Sperm-associated antigen 4-like protein) (Testis and spermatogenesis-related gene 4 protein)
Immunogen	Synthesized peptide derived from part region of human protein
Specificity	SUN5 Polyclonal Antibody detects endogenous levels of protein.
Formulation	Liquid in PBS containing 50% glycerol, and 0.02% sodium azide.
Source	Polyclonal, Rabbit,IgG
Purification	The antibody was affinity-purified from rabbit antiserum by affinity-chromatography using epitope-specific immunogen.
Dilution	WB 1:500-2000 ELISA 1:5000-20000
Concentration	1 mg/ml
Purity	≥90%
Storage Stability	-20°C/1 year
Synonyms	
Observed Band	41kD
Cell Pathway	Nucleus inner membrane ; Single-pass membrane protein . Golgi apparatus . During spermiogenesis, traffics through the Golgi apparatus before reaching the round spermatid inner membrane of the nuclear envelope and later migrates to the coupling apparatus of the sperm during sperm head elongation and differentiation. In mature spermatozoa, is localized to the coupling apparatus of the sperm head and tail in the implementation fossa. .
Tissue Specificity	Sperm (at protein level) (PubMed:27640305). Widely expressed (PubMed:12621555). Conflictingly shown to be specifically expressed in testis (PubMed:21711156).
Function	similarity:Contains 1 Unc84 (SUN) domain.,tissue specificity:Widely expressed.,
Background	similarity:Contains 1 Unc84 (SUN) domain.,tissue specificity:Widely expressed.,
matters needing attention	Avoid repeated freezing and thawing!



Usage suggestions

This product can be used in immunological reaction related experiments. For more information, please consult technical personnel.

Products Images



Western blot analysis of lysates from SW480 cells, primary antibody was diluted at 1:1000, 4° over night