

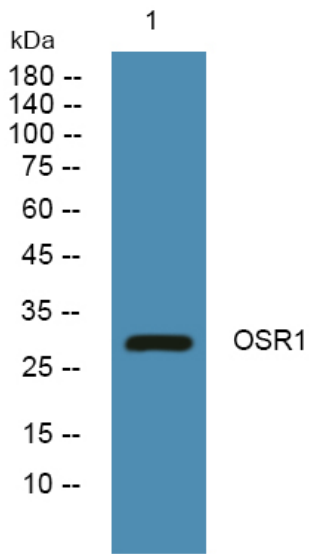


OSR1 Polyclonal Antibody

Catalog No	YP-Ab-07869
Isotype	IgG
Reactivity	Human;Mouse;Rat
Applications	WB;ELISA
Gene Name	OSR1 ODD
Protein Name	Protein odd-skipped-related 1
Immunogen	Synthesized peptide derived from part region of human protein
Specificity	OSR1 Polyclonal Antibody detects endogenous levels of protein.
Formulation	Liquid in PBS containing 50% glycerol, and 0.02% sodium azide.
Source	Polyclonal, Rabbit,IgG
Purification	The antibody was affinity-purified from rabbit antiserum by affinity-chromatography using epitope-specific immunogen.
Dilution	WB 1:500-2000 ELISA 1:5000-20000
Concentration	1 mg/ml
Purity	≥90%
Storage Stability	-20°C/1 year
Synonyms	
Observed Band	29kD
Cell Pathway	Nucleus .
Tissue Specificity	Expressed in adult colon, small intestine, prostate, testis, and fetal lung.
Function	similarity:Belongs to the Odd C2H2-type zinc-finger protein family.,similarity:Contains 3 C2H2-type zinc fingers.,tissue specificity:Expressed in adult colon, small intestine, prostate, testis, and fetal lung.,
Background	similarity:Belongs to the Odd C2H2-type zinc-finger protein family.,similarity:Contains 3 C2H2-type zinc fingers.,tissue specificity:Expressed in adult colon, small intestine, prostate, testis, and fetal lung.,
matters needing attention	Avoid repeated freezing and thawing!
Usage suggestions	This product can be used in immunological reaction related experiments. For more information, please consult technical personnel.



Products Images



Western blot analysis of lysates from U2OS cells,
primary antibody was diluted at 1:1000, 4° over night