

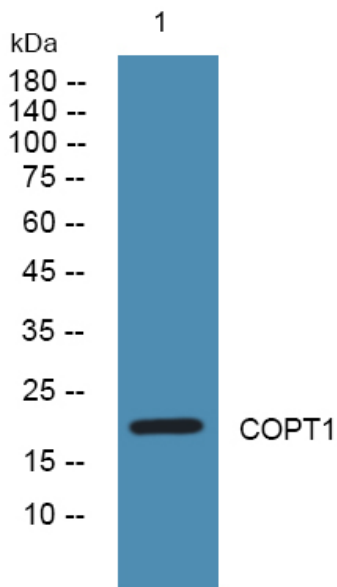


COPT1 Polyclonal Antibody

Catalog No	YP-Ab-07881
Isotype	IgG
Reactivity	Human;Mouse
Applications	WB;ELISA
Gene Name	SLC31A1 COPT1 CTR1
Protein Name	High affinity copper uptake protein 1 (Copper transporter 1) (hCTR1) (Solute carrier family 31 member 1)
Immunogen	Synthesized peptide derived from part region of human protein
Specificity	COPT1 Polyclonal Antibody detects endogenous levels of protein.
Formulation	Liquid in PBS containing 50% glycerol, and 0.02% sodium azide.
Source	Polyclonal, Rabbit,IgG
Purification	The antibody was affinity-purified from rabbit antiserum by affinity-chromatography using epitope-specific immunogen.
Dilution	WB 1:500-2000 ELISA 1:5000-20000
Concentration	1 mg/ml
Purity	≥90%
Storage Stability	-20°C/1 year
Synonyms	
Observed Band	20kD
Cell Pathway	Cell membrane; Multi-pass membrane protein. Localizes to the apical membrane in intestinal epithelial cells. .
Tissue Specificity	Brain,Liver,Lung,Skeletal muscle,Skin,
Function	function:Involved in high-affinity copper uptake.,PTM:O-Glycosylation at Thr-27 protects from proteolytic cleavage in the N-terminal extracellular domain.,similarity:Belongs to the SLC31A transporter family.,subunit:Homotrimer.,
Background	The protein encoded by this gene is a high-affinity copper transporter found in the cell membrane. The encoded protein functions as a homotrimer to effect the uptake of dietary copper. [provided by RefSeq, Aug 2011],
matters needing attention	Avoid repeated freezing and thawing!
Usage suggestions	This product can be used in immunological reaction related experiments. For more information, please consult technical personnel.



Products Images



Western blot analysis of lysates from PC12 cells,
primary antibody was diluted at 1:1000, 4° over night