



IFI30 rabbit pAb

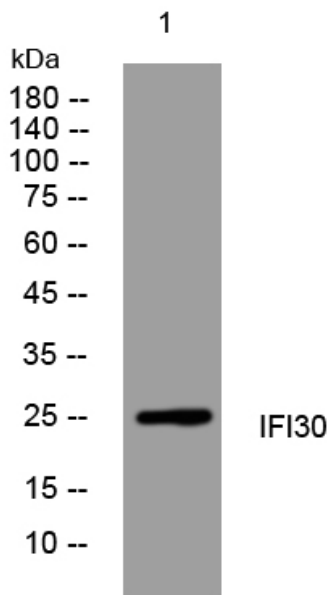
Catalog No	YP-Ab-07892
Isotype	IgG
Reactivity	Human; Mouse;Rat
Applications	WB
Gene Name	IFI30 GILT IP30
Protein Name	IFI30
Immunogen	Synthesized peptide derived from human IFI30 AA range: 3-53
Specificity	This antibody detects endogenous levels of IFI30 at Human/Mouse/Rat
Formulation	Liquid in PBS containing 50% glycerol, 0.5% BSA and 0.06% sodium azide.
Source	Polyclonal, Rabbit,IgG
Purification	The antibody was affinity-purified from rabbit serum by affinity-chromatography using specific immunogen.
Dilution	WB 1:500-2000
Concentration	1 mg/ml
Purity	≥90%
Storage Stability	-20°C/1 year
Synonyms	Gamma-interferon-inducible lysosomal thiol reductase (EC 1.8.-.-) (Gamma-interferon-inducible protein IP-30) (Legumaturain)
Observed Band	25kD
Cell Pathway	Secreted . Lysosome .
Tissue Specificity	Lung,Skin,
Function	function:Cleaves disulfide bonds in proteins by reduction. May facilitate the complete unfolding of proteins destined for lysosomal degradation. May be involved in MHC class II-restricted antigen processing.,induction:Expressed constitutively in antigen-presenting cells and induced by IFN-gamma in other cell types.,PTM:N-glycosylated. Sugar chains contain mannose-6-phosphate.,similarity:Belongs to the GILT family.,
Background	The protein encoded by this gene is a lysosomal thiol reductase that at low pH can reduce protein disulfide bonds. The enzyme is expressed constitutively in antigen-presenting cells and induced by gamma-interferon in other cell types. This enzyme has an important role in MHC class II-restricted antigen processing. [provided by RefSeq, Jul 2008],
matters needing attention	Avoid repeated freezing and thawing!



Usage suggestions

This product can be used in immunological reaction related experiments. For more information, please consult technical personnel.

Products Images



Western blot analysis of lysates from HeLa cells, primary antibody was diluted at 1:1000, 4° over night