

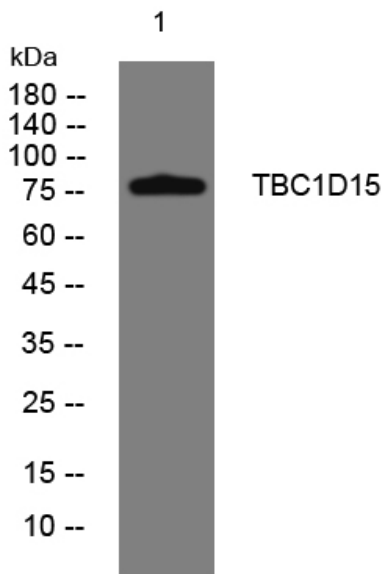


TBC1D15 rabbit pAb

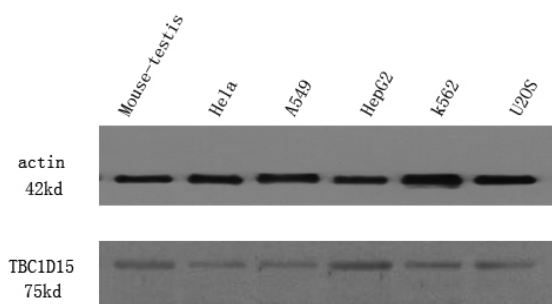
Catalog No	YP-Ab-07895
Isotype	IgG
Reactivity	Human; Mouse
Applications	WB
Gene Name	TBC1D15
Protein Name	TBC1D15
Immunogen	Synthesized peptide derived from human TBC1D15 AA range: 604-654
Specificity	This antibody detects endogenous levels of TBC1D15 at Human/Mouse
Formulation	Liquid in PBS containing 50% glycerol, 0.5% BSA and 0.09% sodium azide.
Source	Polyclonal, Rabbit,IgG
Purification	The antibody was affinity-purified from rabbit serum by affinity-chromatography using specific immunogen.
Dilution	WB 1:500-2000
Concentration	1 mg/ml
Purity	≥90%
Storage Stability	-20°C/1 year
Synonyms	TBC1 domain family member 15 (GTPase-activating protein RAB7) (GAP for RAB7) (Rab7-GAP)
Observed Band	75kD
Cell Pathway	Cytoplasm .
Tissue Specificity	Ubiquitous.
Function	function:May act as a GTPase-activating protein for Rab family protein(s).,similarity:Contains 1 Rab-GAP TBC domain.,
Background	This gene encodes a member of the Ras-like proteins in brain-GTPase activating protein superfamily that share a conserved Tre-2/Bub2/Cdc16 domain. The encoded protein interacts with Ras-like protein in brain 5A and may function as a regulator of intracellular trafficking. Alternate splicing results in multiple transcript variants. [provided by RefSeq, Apr 2009],
matters needing attention	Avoid repeated freezing and thawing!
Usage suggestions	This product can be used in immunological reaction related experiments. For more information, please consult technical personnel.



Products Images



Western blot analysis of lysates from K562 cells, primary antibody was diluted at 1:1000, 4° over night



Western Blot analysis of HeLa cell lysis, treated by EGF. Primary Antibody was diluted at 1:1000. Secondary antibody (catalog#:RS23920) was diluted at 1:10000