

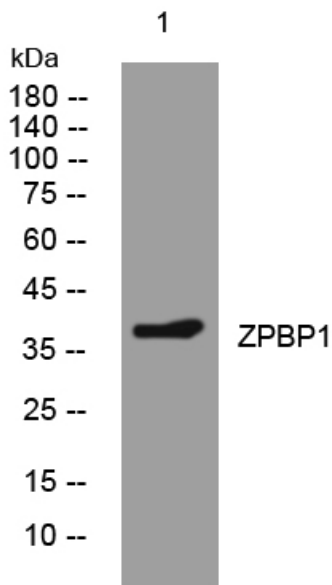


## ZPBP1 rabbit pAb

<b>Catalog No</b>	YP-Ab-07901
<b>Isotype</b>	IgG
<b>Reactivity</b>	Human; Mouse
<b>Applications</b>	WB
<b>Gene Name</b>	ZPBP ZPBP1
<b>Protein Name</b>	ZPBP1
<b>Immunogen</b>	Synthesized peptide derived from human ZPBP1 AA range: 176-226
<b>Specificity</b>	This antibody detects endogenous levels of ZPBP1 at Human/Mouse
<b>Formulation</b>	Liquid in PBS containing 50% glycerol, 0.5% BSA and 0.15% sodium azide.
<b>Source</b>	Polyclonal, Rabbit,IgG
<b>Purification</b>	The antibody was affinity-purified from rabbit serum by affinity-chromatography using specific immunogen.
<b>Dilution</b>	WB 1:500-2000
<b>Concentration</b>	1 mg/ml
<b>Purity</b>	≥90%
<b>Storage Stability</b>	-20°C/1 year
<b>Synonyms</b>	Zona pellucida-binding protein 1 (Sp38)
<b>Observed Band</b>	38kD
<b>Cell Pathway</b>	Cytoplasmic vesicle, secretory vesicle, acrosome membrane ; Peripheral membrane protein . Secreted . First localized in acrosome granule, later migrates to the inner and outer acrosomal membrane. Released after the acrosomal reaction. .
<b>Tissue Specificity</b>	Expressed specifically in testis.
<b>Function</b>	function:May be implicated in gamete interaction during fertilization.,similarity:Belongs to the zona pellucida-binding protein Sp38 family.,
<b>Background</b>	ZPBP is one of several proteins that are thought to participate in secondary binding between acrosome-reacted sperm and the egg-specific extracellular matrix, the zona pellucida (McLeskey et al., 1998 [PubMed 9378618]).[supplied by OMIM, Aug 2008],
<b>matters needing attention</b>	Avoid repeated freezing and thawing!
<b>Usage suggestions</b>	This product can be used in immunological reaction related experiments. For more information, please consult technical personnel.



## Products Images



Western blot analysis of lysates from KB cells, primary antibody was diluted at 1:1000, 4° over night