



MAFA rabbit pAb

Catalog No	YP-Ab-07922
Isotype	IgG
Reactivity	Human; Mouse
Applications	WB
Gene Name	MAFA
Protein Name	MAFA
Immunogen	Synthesized peptide derived from human MAFA AA range: 204-254
Specificity	This antibody detects endogenous levels of MAFA at Human/Mouse
Formulation	Liquid in PBS containing 50% glycerol, 0.5% BSA and 0.36% sodium azide.
Source	Polyclonal, Rabbit,IgG
Purification	The antibody was affinity-purified from rabbit serum by affinity-chromatography using specific immunogen.
Dilution	WB 1:500-2000
Concentration	1 mg/ml
Purity	≥90%
Storage Stability	-20°C/1 year
Synonyms	Transcription factor MafA (Pancreatic beta-cell-specific transcriptional activator) (Transcription factor RIPE3b1) (V-maf musculoaponeurotic fibrosarcoma oncogene homolog A)
Observed Band	38kD
Cell Pathway	Nucleus .
Tissue Specificity	Expressed in the islets of Langerhans (at protein level).
Function	function:Acts as a transcriptional factor. Specifically binds the insulin enhancer element RIPE3b and activates insulin gene expression. Cooperates synergistically with NEUROD1 and PDX1. Phosphorylation by GSK3 increases its transcriptional activity and is required for its oncogenic activity. Involved either as an oncogene or as a tumor suppressor, depending on the cell context.,induction:Up-regulated by glucose.,PTM:Ser-14 and Ser-65 appear to be the major phosphorylation sites. Phosphorylated by MAPK13 on serine and threonine residues (Probable). Phosphorylation by GSK3 requires prior phosphorylation of Ser-65 by another kinase. Phosphorylation proceeds then from Ser-61 to Thr-57, Thr-53 and Ser-49. GSK3-mediated phosphorylation increases its transcriptional activity through the recruitment of the coactivator PCAF, is required for its transforming activity and leads to its degradation

**Background**

MAFA is a transcription factor that binds RIPE3b, a conserved enhancer element that regulates pancreatic beta cell-specific expression of the insulin gene (INS; MIM 176730) (Olbrot et al., 2002 [PubMed 12011435]).[supplied by OMIM, Mar 2008],

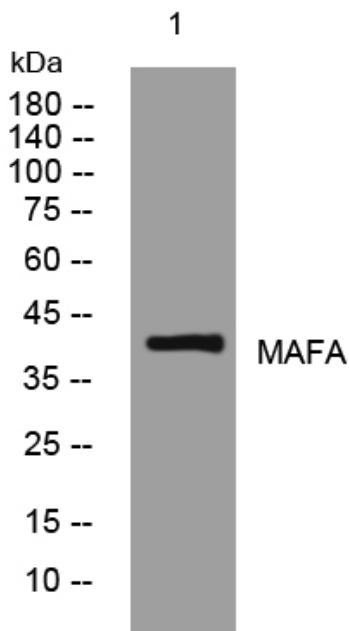
matters needing attention

Avoid repeated freezing and thawing!

Usage suggestions

This product can be used in immunological reaction related experiments. For more information, please consult technical personnel.

Products Images



Western blot analysis of lysates from MDA-MB cells, primary antibody was diluted at 1:1000, 4° over night