



PNMA1 rabbit pAb

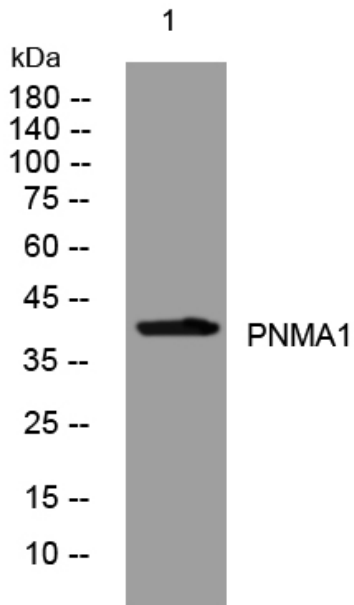
Catalog No	YP-Ab-07925
Isotype	IgG
Reactivity	Human; Mouse;Rat
Applications	WB
Gene Name	PNMA1 MA1
Protein Name	PNMA1
Immunogen	Synthesized peptide derived from human PNMA1 AA range: 14-64
Specificity	This antibody detects endogenous levels of PNMA1 at Human/Mouse/Rat
Formulation	Liquid in PBS containing 50% glycerol, 0.5% BSA and 0.39% sodium azide.
Source	Polyclonal, Rabbit,IgG
Purification	The antibody was affinity-purified from rabbit serum by affinity-chromatography using specific immunogen.
Dilution	WB 1:500-2000
Concentration	1 mg/ml
Purity	≥90%
Storage Stability	-20°C/1 year
Synonyms	Paraneoplastic antigen Ma1 (37 kDa neuronal protein) (Neuron- and testis-specific protein 1)
Observed Band	38kD
Cell Pathway	Nucleus, nucleolus . In tumor cells, it is cytoplasmic.
Tissue Specificity	Testis- and brain-specific. In some cancer patients, specifically expressed by paraneoplastic tumor cells.
Function	miscellaneous:Antibodies against PNMA1 are present in sera from patients suffering of paraneoplastic neurological disorders.,similarity:Belongs to the PNMA family.,subcellular location:In tumor cells, it is cytoplasmic.,tissue specificity:Testis and brain specific. In some patients suffering from cancers, it is also specifically expressed by the paraneoplastic tumor cells.,
Background	This gene encodes a neuron- and testis-specific protein that is also expressed in some paraneoplastic syndromes affecting the nervous system. Some patients with neurologic disorders develop antibodies against the protein encoded by this gene. The identification of the antineuronal antibodies in the sera of these patients has facilitated the diagnosis of paraneoplastic neurological disorders and the early detection of the associated tumors. [provided by RefSeq, Feb 2014],
matters needing attention	Avoid repeated freezing and thawing!



Usage suggestions

This product can be used in immunological reaction related experiments. For more information, please consult technical personnel.

Products Images



Western blot analysis of lysates from SW480 cells, primary antibody was diluted at 1:1000, 4° over night