



OTX1 rabbit pAb

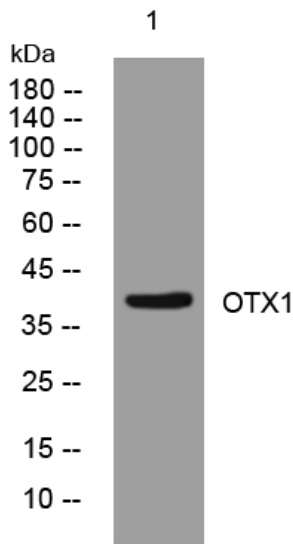
Catalog No	YP-Ab-07947
Isotype	IgG
Reactivity	Human; Mouse;Rat
Applications	WB
Gene Name	OTX1
Protein Name	OTX1
Immunogen	Synthesized peptide derived from human OTX1 AA range: 236-286
Specificity	This antibody detects endogenous levels of OTX1 at Human/Mouse/Rat
Formulation	Liquid in PBS containing 50% glycerol, 0.5% BSA and 0.61% sodium azide.
Source	Polyclonal, Rabbit,IgG
Purification	The antibody was affinity-purified from rabbit serum by affinity-chromatography using specific immunogen.
Dilution	WB 1:500-2000
Concentration	1 mg/ml
Purity	≥90%
Storage Stability	-20°C/1 year
Synonyms	Homeobox protein OTX1 (Orthodenticle homolog 1)
Observed Band	38kD
Cell Pathway	Nucleus .
Tissue Specificity	Expressed in brain. Detected in the anterior part of the neural fetal retina (at protein level).
Function	developmental stage:Embryo.,function:Probably plays a role in the development of the brain and the sense organs. Can bind to the BCD target sequence (BTS): 5'-TCTAATCCC-3'.,similarity:Belongs to the paired homeobox family. Bicoid subfamily.,similarity:Contains 1 homeobox DNA-binding domain.,tissue specificity:Expressed in brain.,
Background	This gene encodes a member of the bicoid sub-family of homeodomain-containing transcription factors. The encoded protein acts as a transcription factor and may play a role in brain and sensory organ development. A similar protein in mouse is required for proper brain and sensory organ development and can cause epilepsy. Alternative splicing results in multiple transcript variants. [provided by RefSeq, Jan 2015],
matters needing attention	Avoid repeated freezing and thawing!



Usage suggestions

This product can be used in immunological reaction related experiments. For more information, please consult technical personnel.

Products Images



Western blot analysis of lysates from HCT116 cells, primary antibody was diluted at 1:1000, 4° over night