



# GNAI2 rabbit pAb

<b>Catalog No</b>	YP-Ab-07954
<b>Isotype</b>	IgG
<b>Reactivity</b>	Human; Mouse;Rat
<b>Applications</b>	WB
<b>Gene Name</b>	GNAI2 GNAI2B
<b>Protein Name</b>	GNAI2
<b>Immunogen</b>	Synthesized peptide derived from human GNAI2 AA range: 274-324
<b>Specificity</b>	This antibody detects endogenous levels of GNAI2 at Human/Mouse/Rat
<b>Formulation</b>	Liquid in PBS containing 50% glycerol, 0.5% BSA and 0.68% sodium azide.
<b>Source</b>	Polyclonal, Rabbit,IgG
<b>Purification</b>	The antibody was affinity-purified from rabbit serum by affinity-chromatography using specific immunogen.
<b>Dilution</b>	WB 1:500-2000
<b>Concentration</b>	1 mg/ml
<b>Purity</b>	≥90%
<b>Storage Stability</b>	-20°C/1 year
<b>Synonyms</b>	Guanine nucleotide-binding protein G(i) subunit alpha-2 (Adenylate cyclase-inhibiting G alpha protein)
<b>Observed Band</b>	38kD
<b>Cell Pathway</b>	Cytoplasm . Cytoplasm, cytoskeleton, microtubule organizing center, centrosome . Cell membrane . Membrane ; Lipid-anchor . Localizes in the centrosomes of interphase and mitotic cells. Detected at the cleavage furrow and/or the midbody.
<b>Tissue Specificity</b>	Brain,Cerebellum,Kidney,Lung,Mammary gland,Testis,
<b>Function</b>	function:Guanine nucleotide-binding proteins (G proteins) are involved as modulators or transducers in various transmembrane signaling systems. The G(i) proteins are involved in hormonal regulation of adenylate cyclase: they inhibit the cyclase in response to beta-adrenergic stimuli.,similarity:Belongs to the G-alpha family. G(i/o/t/z) subfamily.,subunit:G proteins are composed of 3 units; alpha, beta and gamma. The alpha chain contains the guanine nucleotide binding site. Interacts with GPSM1 (By similarity). Interacts with UNC5B.,
<b>Background</b>	The protein encoded by this gene is an alpha subunit of guanine nucleotide binding proteins (G proteins). The encoded protein contains the guanine nucleotide binding site and is involved in the hormonal regulation of adenylate cyclase. Several transcript variants encoding different isoforms have been found for this gene. [provided by RefSeq, Sep 2013],



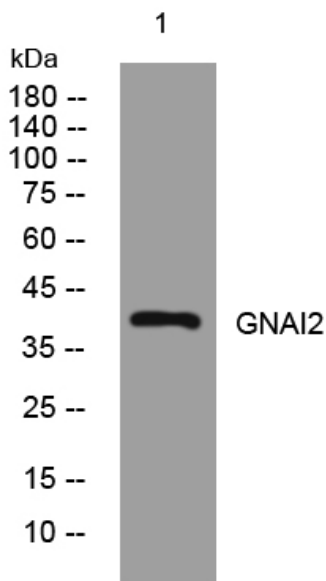
**matters needing attention**

Avoid repeated freezing and thawing!

**Usage suggestions**

This product can be used in immunological reaction related experiments. For more information, please consult technical personnel.

**Products Images**



Western blot analysis of lysates from HpeG2 cells, primary antibody was diluted at 1:1000, 4° over night