

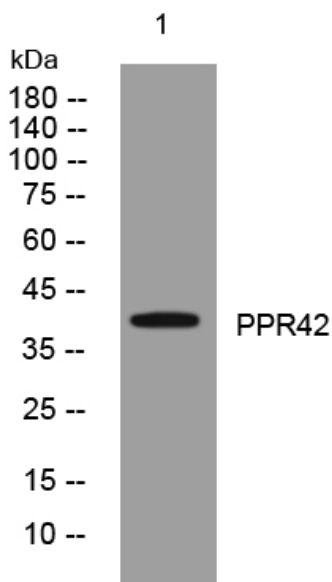


## PPR42 rabbit pAb

<b>Catalog No</b>	YP-Ab-07957
<b>Isotype</b>	IgG
<b>Reactivity</b>	Human; Mouse
<b>Applications</b>	WB
<b>Gene Name</b>	PPP1R42 LRRC67
<b>Protein Name</b>	PPR42
<b>Immunogen</b>	Synthesized peptide derived from human PPR42 AA range: 4-54
<b>Specificity</b>	This antibody detects endogenous levels of PPR42 at Human/Mouse
<b>Formulation</b>	Liquid in PBS containing 50% glycerol, 0.5% BSA and 0.71% sodium azide.
<b>Source</b>	Polyclonal, Rabbit,IgG
<b>Purification</b>	The antibody was affinity-purified from rabbit serum by affinity-chromatography using specific immunogen.
<b>Dilution</b>	WB 1:500-2000
<b>Concentration</b>	1 mg/ml
<b>Purity</b>	≥90%
<b>Storage Stability</b>	-20°C/1 year
<b>Synonyms</b>	Protein phosphatase 1 regulatory subunit 42 (Leucine-rich repeat-containing protein 67)
<b>Observed Band</b>	38kD
<b>Cell Pathway</b>	Cytoplasm, cytoskeleton . Cytoplasm, cytoskeleton, microtubule organizing center, centrosome . Colocalizes with alpha tubulin to the manchette of developing spermatids. Detected to nuclear rim in pachytene spermatocytes. Detected at nuclear surface, opposite the acrosome in elongating spermatids. Detected at the microtubule-organizing center (MTOC). Localized to the centrosomal region of late-stage spermatids (By similarity). .
<b>Tissue Specificity</b>	Testis,
<b>Function</b>	similarity:Contains 6 LRR (leucine-rich) repeats.,
<b>Background</b>	
<b>matters needing attention</b>	Avoid repeated freezing and thawing!
<b>Usage suggestions</b>	This product can be used in immunological reaction related experiments. For more information, please consult technical personnel.



## Products Images



Western blot analysis of lysates from HuvEc cells,  
primary antibody was diluted at 1:1000, 4° over night