



SPSB3 rabbit pAb

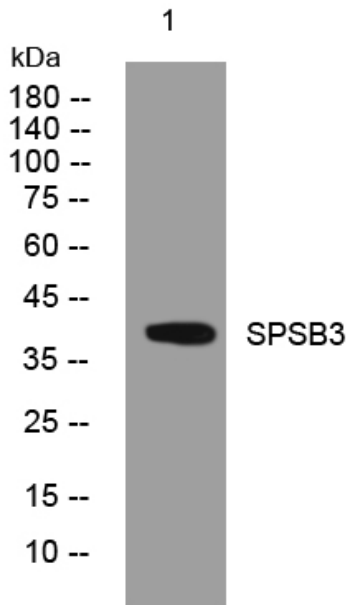
Catalog No	YP-Ab-07959
Isotype	IgG
Reactivity	Human; Mouse
Applications	WB
Gene Name	SPSB3 C16orf31 SSB3
Protein Name	SPSB3
Immunogen	Synthesized peptide derived from human SPSB3 AA range: 102-152
Specificity	This antibody detects endogenous levels of SPSB3 at Human/Mouse
Formulation	Liquid in PBS containing 50% glycerol, 0.5% BSA and 0.73% sodium azide.
Source	Polyclonal, Rabbit,IgG
Purification	The antibody was affinity-purified from rabbit serum by affinity-chromatography using specific immunogen.
Dilution	WB 1:500-2000
Concentration	1 mg/ml
Purity	≥90%
Storage Stability	-20°C/1 year
Synonyms	SPRY domain-containing SOCS box protein 3 (SSB-3)
Observed Band	38kD
Cell Pathway	intracellular,
Tissue Specificity	Brain, Eye, Hypothalamus, Testis,
Function	domain:The SOCS box domain mediates the interaction with the Elongin BC complex, an adapter module in different E3 ubiquitin ligase complexes.,function:May be a substrate recognition component of a SCF-like ECS (Elongin BC-CUL2/5-SOCS-box protein) E3 ubiquitin-protein ligase complex which mediates the ubiquitination and subsequent proteasomal degradation of target proteins.,pathway:Protein modification; protein ubiquitination.,sequence caution:Intron retention.,similarity:Belongs to the SPSB family.,similarity:Contains 1 B30.2/SPRY domain.,similarity:Contains 1 SOCS box domain.,subunit:Interacts with MET.,
Background	
matters needing attention	Avoid repeated freezing and thawing!



Usage suggestions

This product can be used in immunological reaction related experiments. For more information, please consult technical personnel.

Products Images



Western blot analysis of lysates from HeLa cells, primary antibody was diluted at 1:1000, 4° over night