

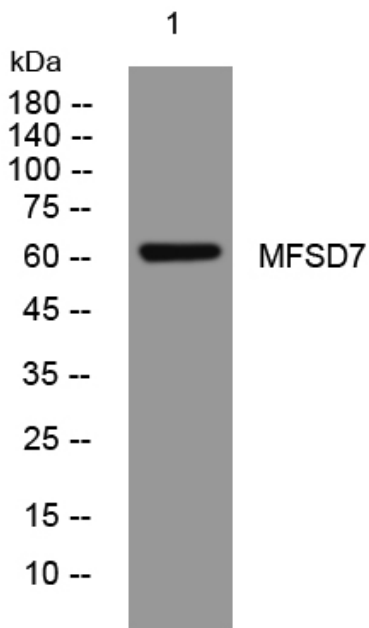


MFSD7 rabbit pAb

Catalog No	YP-Ab-07962
Isotype	IgG
Reactivity	Human; Mouse
Applications	WB
Gene Name	MFSD7 LP2561 UNQ385/PRO717
Protein Name	MFSD7
Immunogen	Synthesized peptide derived from human MFSD7 AA range: 259-309
Specificity	This antibody detects endogenous levels of MFSD7 at Human/Mouse
Formulation	Liquid in PBS containing 50% glycerol, 0.5% BSA and 0.76% sodium azide.
Source	Polyclonal, Rabbit,IgG
Purification	The antibody was affinity-purified from rabbit serum by affinity-chromatography using specific immunogen.
Dilution	WB 1:500-2000
Concentration	1 mg/ml
Purity	≥90%
Storage Stability	-20°C/1 year
Synonyms	Major facilitator superfamily domain-containing protein 7 (Myosin light polypeptide 5 regulatory protein) (MYL5)
Observed Band	60kD
Cell Pathway	Membrane ; Multi-pass membrane protein .
Tissue Specificity	Blood,Spleen,
Function	similarity:Belongs to the major facilitator superfamily.,
Background	
matters needing attention	Avoid repeated freezing and thawing!
Usage suggestions	This product can be used in immunological reaction related experiments. For more information, please consult technical personnel.



Products Images



Western blot analysis of lysates from VEC cells,
primary antibody was diluted at 1:1000, 4° over night