



ARI3B rabbit pAb

Catalog No	YP-Ab-07969
Isotype	IgG
Reactivity	Human; Mouse
Applications	WB
Gene Name	ARID3B BDP DRIL2
Protein Name	ARI3B
Immunogen	Synthesized peptide derived from human ARI3B AA range: 459-509
Specificity	This antibody detects endogenous levels of ARI3B at Human/Mouse
Formulation	Liquid in PBS containing 50% glycerol, 0.5% BSA and 0.83% sodium azide.
Source	Polyclonal, Rabbit,IgG
Purification	The antibody was affinity-purified from rabbit serum by affinity-chromatography using specific immunogen.
Dilution	WB 1:500-2000
Concentration	1 mg/ml
Purity	≥90%
Storage Stability	-20°C/1 year
Synonyms	AT-rich interactive domain-containing protein 3B (ARID domain-containing protein 3B) (Bright and dead ringer protein) (Bright-like protein)
Observed Band	60kD
Cell Pathway	Nucleus .
Tissue Specificity	Expressed in placenta, testis and leukocytes. Expressed in neuroblastoma. Present in K-562 erythrocytic leukemia cell line (at protein level).
Function	function:Transcription factor which may be involved in neuroblastoma growth and malignant transformation. Favors nuclear targeting of ARID3A.,similarity:Contains 1 ARID domain.,subunit:Heterodimer with ARID3A. Interacts with unphosphorylated RB1.,tissue specificity:Expressed in placenta, testis and leukocytes. Expressed in neuroblastoma. Present in K562 erythrocytic leukemia cells (at protein level).,
Background	This gene encodes a member of the ARID (AT-rich interaction domain) family of DNA-binding proteins. The encoded protein is homologous with two proteins that bind to the retinoblastoma gene product, and also with the mouse Bright and Drosophila dead ringer proteins. A pseudogene on chromosome 1p31 exists for this gene. Members of the ARID family have roles in embryonic patterning, cell lineage gene regulation, cell cycle control, transcriptional regulation and possibly in chromatin structure modification. [provided by RefSeq, Jul 2008],



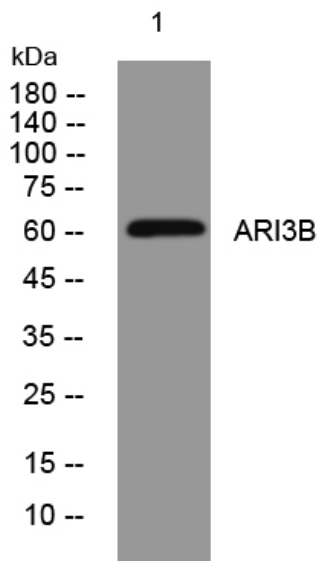
matters needing attention

Avoid repeated freezing and thawing!

Usage suggestions

This product can be used in immunological reaction related experiments. For more information, please consult technical personnel.

Products Images



Western blot analysis of lysates from HpeG2 cells, primary antibody was diluted at 1:1000, 4° over night