



EFS rabbit pAb

Catalog No	YP-Ab-07972
Isotype	IgG
Reactivity	Human; Mouse
Applications	WB
Gene Name	EFS CASS3
Protein Name	EFS
Immunogen	Synthesized peptide derived from human EFS AA range: 108-158
Specificity	This antibody detects endogenous levels of EFS at Human/Mouse
Formulation	Liquid in PBS containing 50% glycerol, 0.5% BSA and 0.86% sodium azide.
Source	Polyclonal, Rabbit,IgG
Purification	The antibody was affinity-purified from rabbit serum by affinity-chromatography using specific immunogen.
Dilution	WB 1:500-2000
Concentration	1 mg/ml
Purity	≥90%
Storage Stability	-20°C/1 year
Synonyms	Embryonal Fyn-associated substrate (hEFS) (Cas scaffolding protein family member 3)
Observed Band	60kD
Cell Pathway	cytoplasm,
Tissue Specificity	The protein has been detected in lung and placenta.
Function	domain:Contains a central domain (substrate domain) containing multiple potential SH2-binding sites and a C-terminal domain containing a divergent helix-loop-helix (HLH) motif. The SH2-binding sites putatively bind CRK, NCK and ABL SH2 domains.,domain:The SH3-binding sites that bind to the SRC SH3 domain are required for interaction with CRK and are implicated in promotion of serum response element (SRE) activation. The SH3 domain interacts with focal adhesion kinase 1.,function:Docking protein which plays a central coordinating role for tyrosine-kinase-based signaling related to cell adhesion. May serve as an activator of SRC and a downstream effector. Interacts with the SH3 domain of FYN and with CRK, SRC, and YES.,PTM:Phosphorylated on multiple tyrosine residues. Phosphorylated on tyrosines by FYN and SRC.,similarity:Belongs to the CAS family.,similarity:Contains 1 SH3 domain.,tissue
Background	The longest protein isoform encoded by this gene contains an SH3 domain, which is known to be important in intracellular signal transduction. The protein encoded



by a similar gene in mice was shown to bind to SH3 domains of protein-tyrosine kinases. The function of this gene is unknown. Three alternatively spliced variants encoding different isoforms have been described for this gene. [provided by RefSeq, Mar 2013],

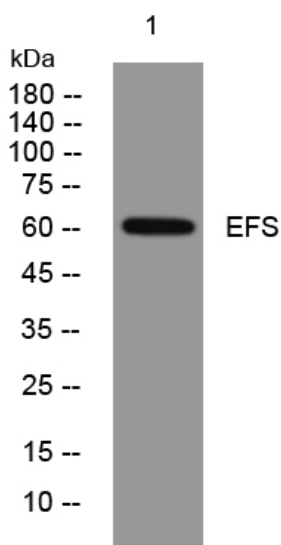
matters needing attention

Avoid repeated freezing and thawing!

Usage suggestions

This product can be used in immunological reaction related experiments. For more information, please consult technical personnel.

Products Images



Western blot analysis of lysates from SH-SY5Y cells, primary antibody was diluted at 1:1000, 4° over night