

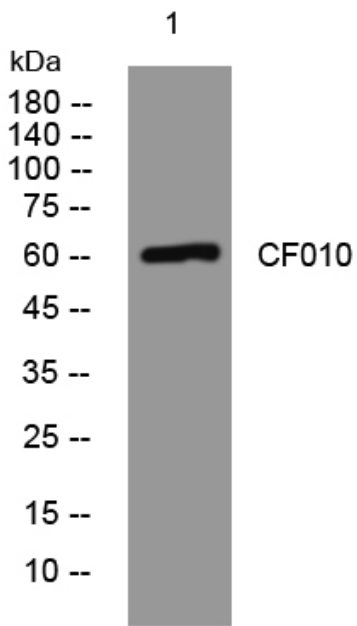


CF010 rabbit pAb

| | |
|----------------------------------|---|
| Catalog No | YP-Ab-07992 |
| Isotype | IgG |
| Reactivity | Human;Rat;Mouse; |
| Applications | WB |
| Gene Name | C6orf10 |
| Protein Name | CF010 |
| Immunogen | Synthesized peptide derived from human CF010 AA range: 429-479 |
| Specificity | This antibody detects endogenous levels of CF010 at Human |
| Formulation | Liquid in PBS containing 50% glycerol, 0.5% BSA and 0.106% sodium azide. |
| Source | Polyclonal, Rabbit,IgG |
| Purification | The antibody was affinity-purified from rabbit serum by affinity-chromatography using specific immunogen. |
| Dilution | WB 1:500-2000 |
| Concentration | 1 mg/ml |
| Purity | ≥90% |
| Storage Stability | -20°C/1 year |
| Synonyms | Uncharacterized protein C6orf10 |
| Observed Band | 60kD |
| Cell Pathway | Membrane ; Multi-pass membrane protein . |
| Tissue Specificity | Brain,Sperm, |
| Function | |
| Background | |
| matters needing attention | Avoid repeated freezing and thawing! |
| Usage suggestions | This product can be used in immunological reaction related experiments. For more information, please consult technical personnel. |



Products Images



Western blot analysis of lysates from DU145 cells,
primary antibody was diluted at 1:1000, 4° over night