

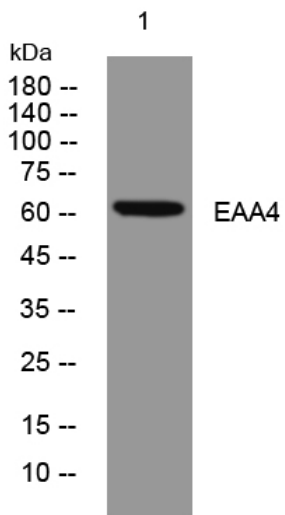


EAA4 rabbit pAb

Catalog No	YP-Ab-08004
Isotype	IgG
Reactivity	Human; Mouse;Rat
Applications	WB
Gene Name	SLC1A6 EAAT4
Protein Name	EAA4
Immunogen	Synthesized peptide derived from human EAA4 AA range: 320-370
Specificity	This antibody detects endogenous levels of EAA4 at Human/Mouse/Rat
Formulation	Liquid in PBS containing 50% glycerol, 0.5% BSA and 0.118% sodium azide.
Source	Polyclonal, Rabbit,IgG
Purification	The antibody was affinity-purified from rabbit serum by affinity-chromatography using specific immunogen.
Dilution	WB 1:500-2000
Concentration	1 mg/ml
Purity	≥90%
Storage Stability	-20°C/1 year
Synonyms	Excitatory amino acid transporter 4 (Sodium-dependent glutamate/aspartate transporter) (Solute carrier family 1 member 6)
Observed Band	60kD
Cell Pathway	Cell membrane ; Multi-pass membrane protein .
Tissue Specificity	Brain. Expressed densely and selectively in cell bodies of Purkinje cells.
Function	function:Transports L-glutamate and also L- and D-aspartate. Seems to act as a symport by cotransporting sodium.,similarity:Belongs to the sodium:dicarboxylate (SDF) symporter (TC 2.A.23) family.,tissue specificity:Brain. Expressed densely and selectively in cell bodies of Purkinje cells.,
Background	
matters needing attention	Avoid repeated freezing and thawing!
Usage suggestions	This product can be used in immunological reaction related experiments. For more information, please consult technical personnel.



Products Images



Western blot analysis of lysates from THP-1 cells,
primary antibody was diluted at 1:1000, 4° over night